

# Distribution Network Asset Data Available To Third Parties

### **LinesearchBeforeUDig** (<http://www.linesearchbeforeudig.co.uk>)

This service is available 24/7 – 365 days a year. New users are required to complete a simple online registration process (access via the “Register Here” link on the front page).

Once your registration has been approved, you will be sent a validation email to your registered email address. Once you have completed the validation you will be able to login and request plans from across the entire WPD area.

Following a request being submitted plans are returned, on average, in under 5 minutes. Plans are returned to you in PDF format to your registered email address.

### **WPD Planning Data Portal** (<http://www.westernpower.co.uk/planningdata>)

New users are required to complete a simple online registration process (follow the “Click [here](#) to register” link on the front page).

Once your registration has been approved, you will be sent a confirmation email to your registered email address. Once you receive this mail you will be able to login and access the facilities you have been granted access to.

### **Smallscale Mapping**

The data may be accessed online via Western Power Distribution’s Long Term Development Statement (LTDS) or downloaded from the WPD Planning Data Portal.

The LTDS can be accessed at <http://www.westernpower.co.uk/Partners> (follow the “please apply here” link).

See above for access to the WPD Planning Data Portal.

Alternately a copy of the Smallscale Mapping for the entire WPD area may be requested on DVD by using the general data request details given below.

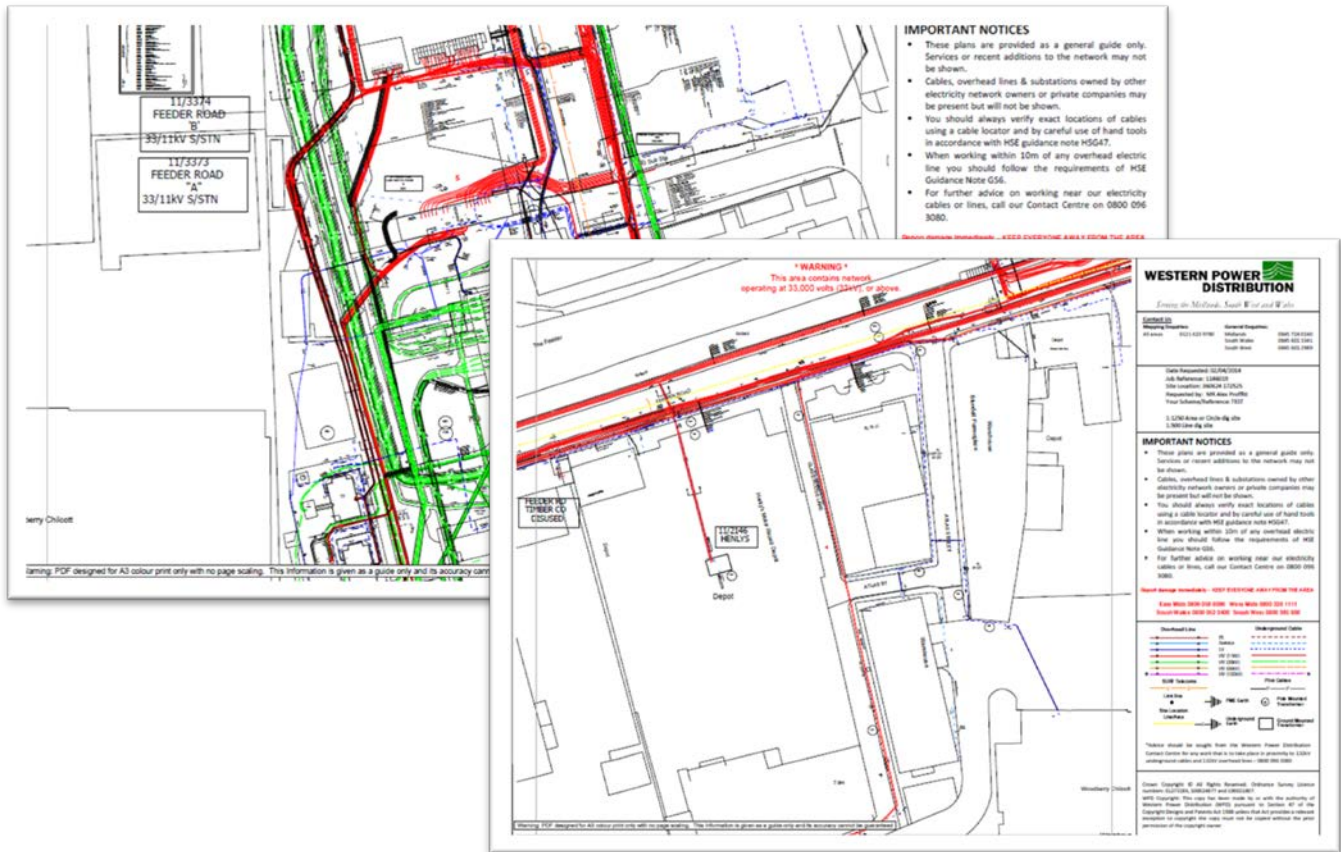
### **All Other Data Requests**

To request access to all other data sets please use the following contact details:

Email: [wpdmapresponse@westernpower.co.uk](mailto:wpdmapresponse@westernpower.co.uk)

Telephone: 0139 235 2671 or 0121 623 9780

## Suitability - Safe Digging, Detailed Planning and Design.

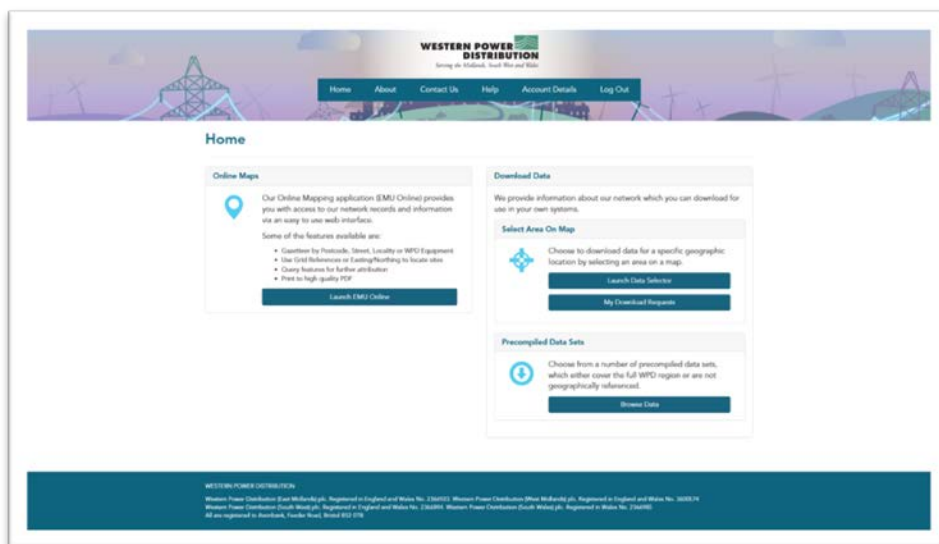


An online application which enables you to request plans from our Geographic Information System. Plans are returned in PDF format via email, usually within 5 minutes. Users may select A4 or A3 paper sizes and plans will be returned as 1:500 or 1:1250 scale depending on the type of request made. **Only plans produced by LinesearchBeforeUDig are approved by WPD for Safe Digging purposes.**

The benefits of this data are:

- Plans returned from our **most current** GIS data, updated nightly.
- Safety Advice documents provided with each request.
- Overhead conductors and Underground cables at **all** voltages.
- Locations of Overhead Support Structures (Poles / Towers / Gantries).
- Location of Points of Isolation on the Overhead Network (Pole Mounted Switches / Fuses).
- Position of BSP, GSP and Distribution substations (Overhead and Ground Mounted).
- Supplied against Ordnance Survey MasterMap (High accuracy and detailed map).
- Easting / Northing of the centre point of the map included on plans.

## Suitability – Initial Planning and Design.



An online application which provides multiple options for access our Geographic Information:

- WPD EMU (Electronic Mapping Utilisation) Online; an online GIS system \*
- Request asset information for download; the data can be returned in a number of common GIS / CAD file formats (chosen by the user), usually within 15 minutes (**LOW VOLTAGE NETWORK IS NOT INCLUDED**).

The benefits of this system are:

- Users are able to select their own geographical areas of interest or download pre-compiled sets of data for the entire WPD Distribution Network area.
- Users are able to select which of the above datasets they wish to receive and in what file format.
- Data requests are processed automatically and accessed via secure file download.
- The following data sets are available to download via the system:
  - WPD GIS Data – Fully attributed, available as Google Earth KML or ESRI ShapeFile\*
  - WPD CAD Data – Available as AutoCAD DWG or Bentley Microstation DGN\*
  - Smallscale Mapping – Supplied as Adobe PDF\*

\* See following pages for details

## Suitability – Initial Planning and Design at any size.

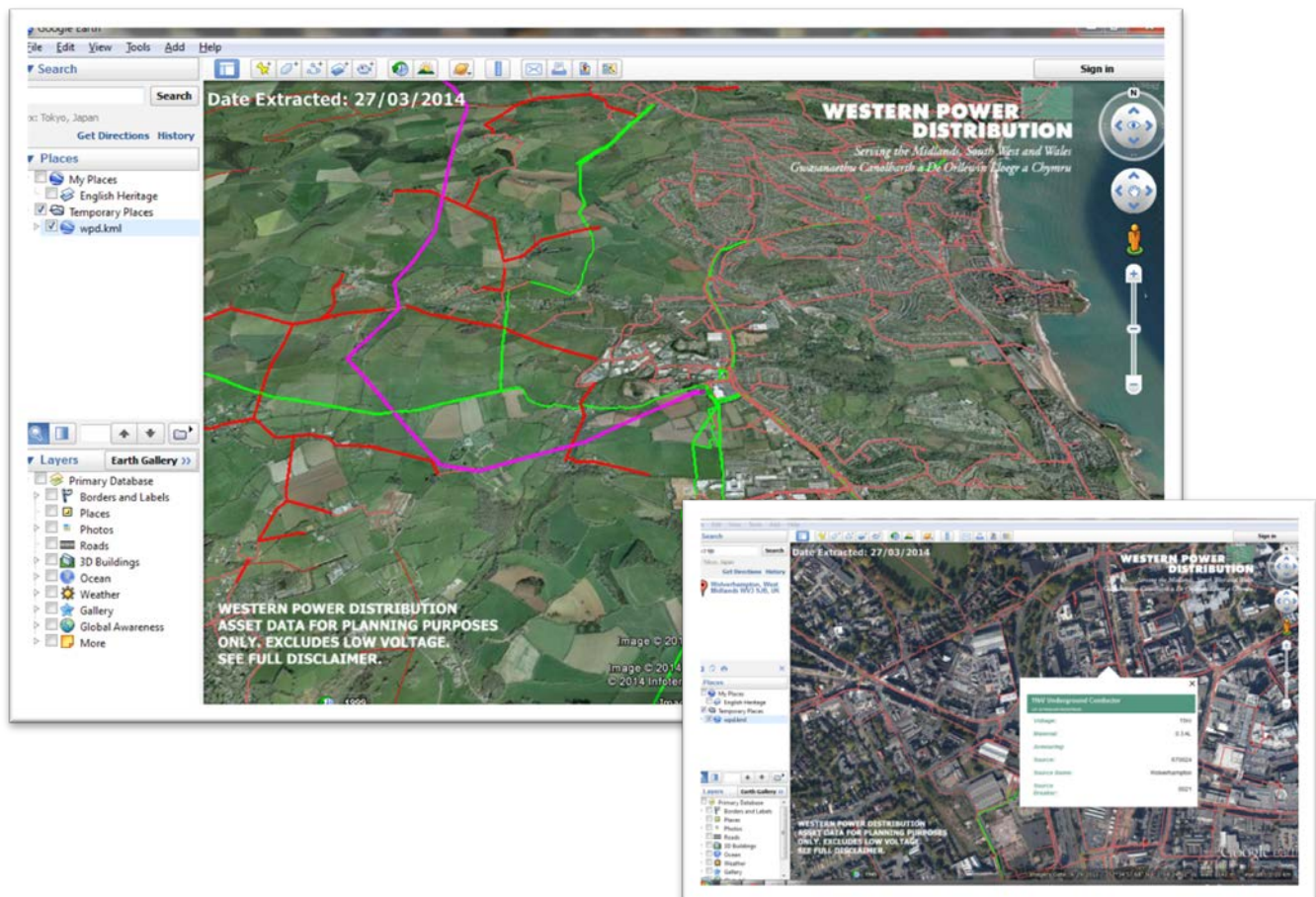


EMU Online is Map Viewing and Interrogation software produced by WPD. The application is accessed via the WPD Planning Data Portal website and runs within your web browser. It enables the user to search for an area via Grid References, Street Name / Postcode or WPD Asset Name.

The benefits of this data and application are:

- Overhead conductors and Underground cables at **all** voltages.
- Locations of Overhead Support Structures (Poles / Towers / Gantries).
- Location of Points of Isolation on the Underground & Overhead Network (Linkboxes / Pole Mounted Switches / Fuses).
- Position of BSP, GSP and Distribution substations (Overhead and Ground Mounted).
- Users can highlight “feeders” at 6.6kV and above.
- Users can interrogate WPD Assets to view connectivity and asset information.
- Users can print maps to high quality PDFs.
- Built in tools for measuring distances and areas.
- Supplied against Ordnance Survey MasterMap (High accuracy and detailed map)
- Also includes HV / EHV Straight-line Diagrams and LV Schematics (In the Midlands).
- Accessible on PC / Mac, iOS and Android devices without the installation of additional software.

**Suitability – Initial Planning and Design at any size.**  
**STRICTLY NOT FOR USE WHERE WORKS AT SITE ARE BEING UNDERTAKEN**



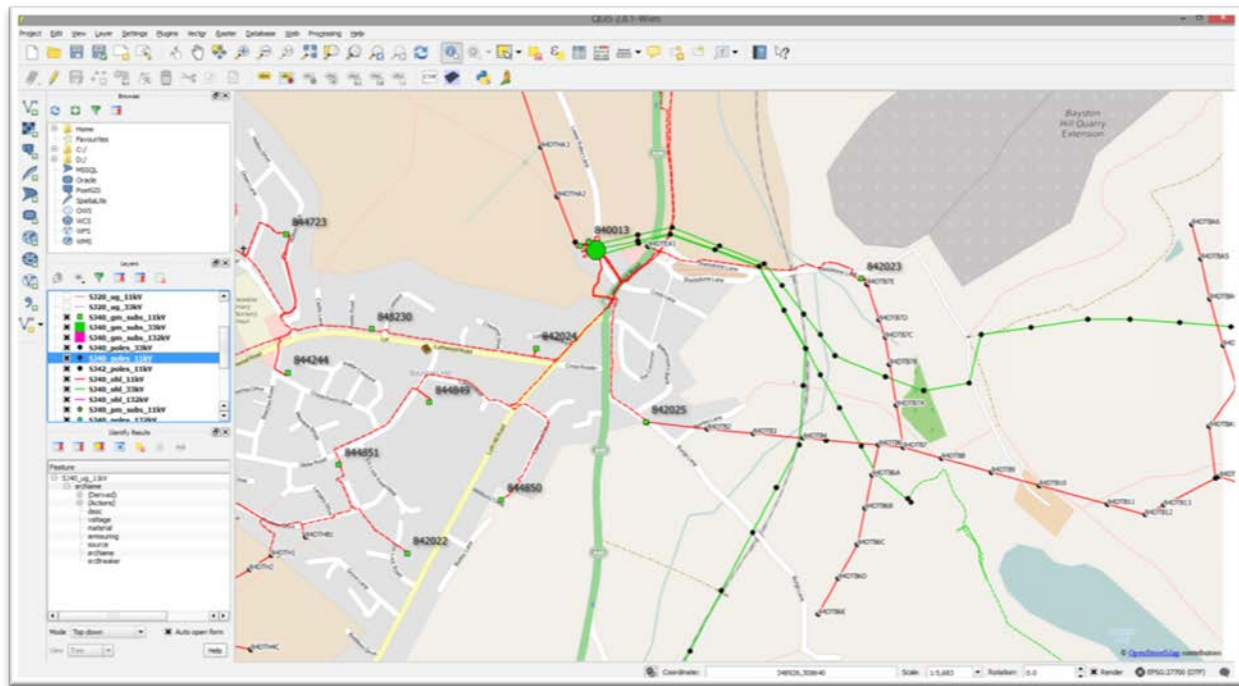
This enables users to view our Distribution Network Assets in the free Google Earth application (and other applications capable of importing KML data).

The benefits of this data and application are:

- Overhead conductors and Underground cables from 6.6kV upwards (**LOW VOLTAGE NETWORK IS NOT INCLUDED**).
- Locations of Overhead Support Structures (Poles / Towers / Gantries).
- Position of BSP, GSP and Distribution substations (Overhead and Ground Mounted).
- Users can interrogate WPD Assets to view connectivity and asset information.
- Users can print maps of user defined areas (Google Earth tool).
- Tools for measuring distances and areas (Google Earth tool).
- Tools for adding annotations and planned works to maps (Google Earth tool).
- Can be viewed against Aerial Photography (Supplied by Google Earth).
- Ability to load other data sources simultaneously (Google Earth tool).

**Suitability – Initial Planning and Design at any size.**

**STRICTLY NOT FOR USE WHERE WORKS AT SITE ARE BEING UNDERTAKEN**



Screenshot shows WPD GIS Data in ShapeFile format loaded in QGIS, a free GIS application.

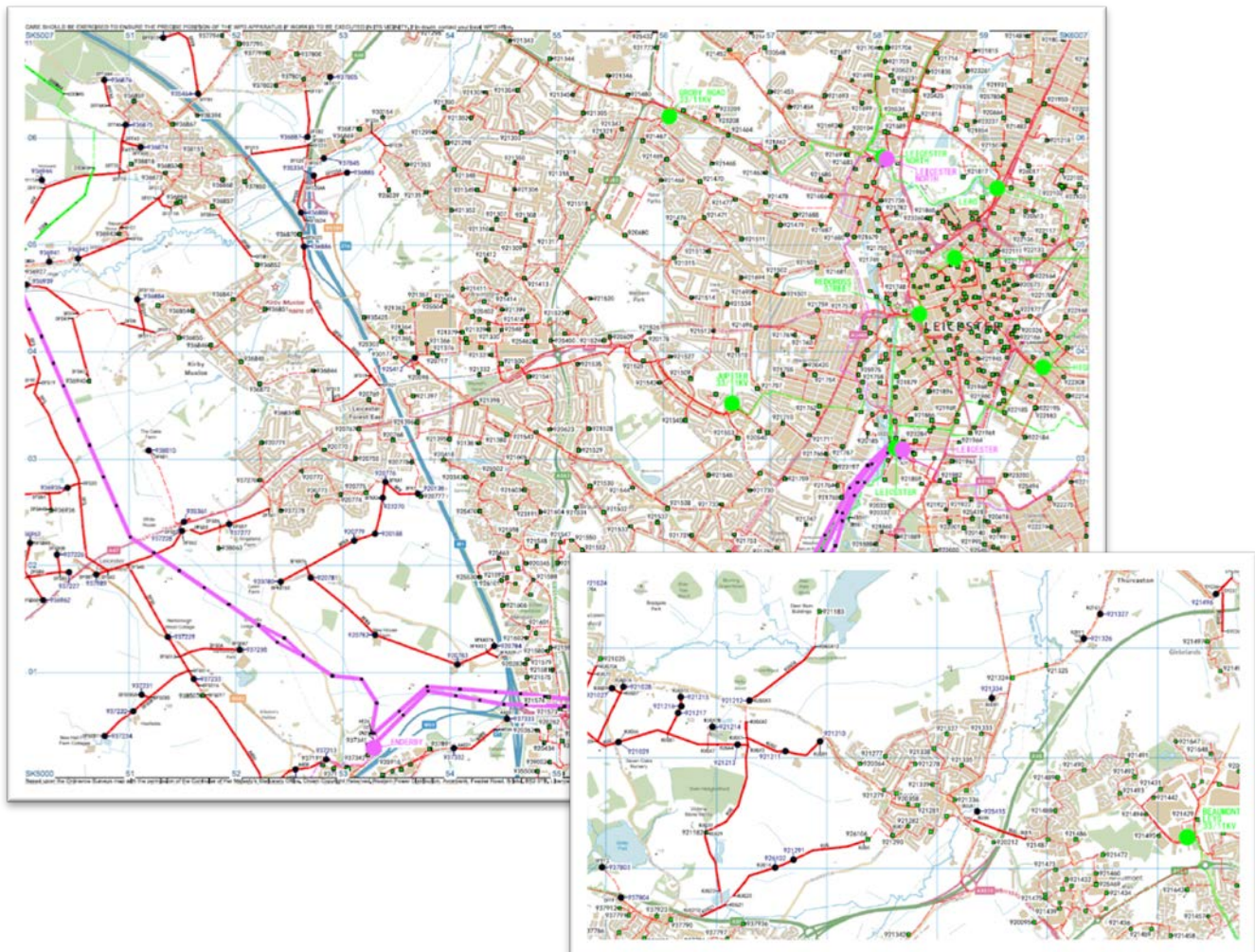
An export of our Distribution Network Assets to the following common GIS / CAD File Formats:

- ESRI ShapeFile
- AutoCAD DWG / DXF
- Microstation DGN

The benefits of this data and application are:

- Overhead conductors and Underground cables from 6.6kV upwards (**LOW VOLTAGE NETWORK IS NOT INCLUDED**).
- Locations of Overhead Support Structures (Poles / Towers / Gantries).
- Position of BSP, GSP and Distribution substations (Overhead and Ground Mounted).
- Users can interrogate WPD Assets to view connectivity and asset information.

### Suitability – Initial Large Scale Planning and Design.



Supplied as 1:25,000 Scale PDF's, includes a Keysheet and Symbolology legend.

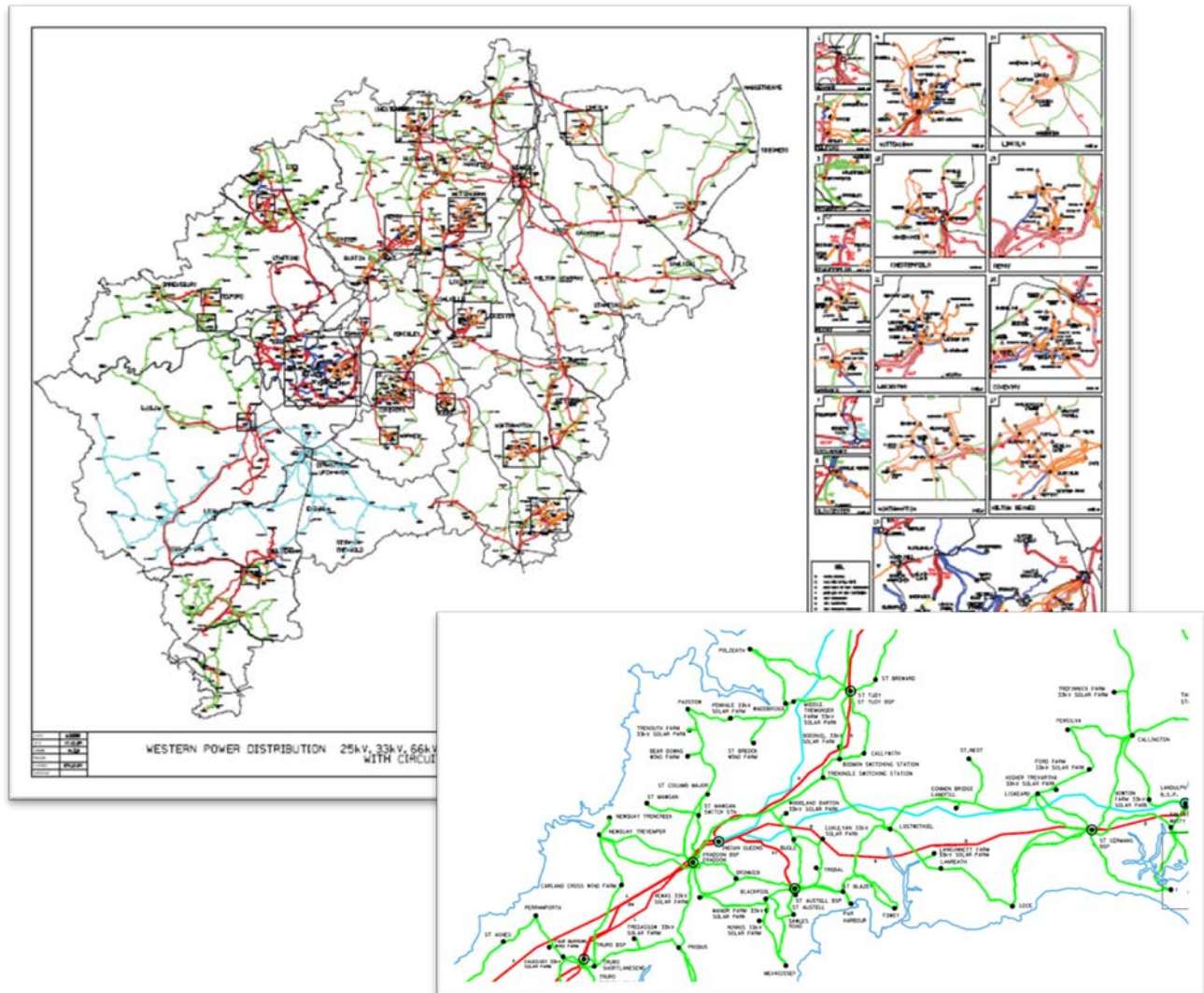
Available on DVD or via the WPD Long Term Development Statement website (See How To Request Data for details).

Data refreshed every 6 months.

The benefits of this data are:

- Overhead conductors and Underground cables from 6.6kV upwards (Low Voltage is NOT included).
- Locations of Overhead Support Structures (Poles / Towers / Gantries).
- Location of Points of Isolation on the Overhead Network (Pole Mounted Switches / Fuses).
- Position of BSP, GSP and Distribution substations (Overhead and Ground Mounted).
- Supplied against free Ordnance Survey Mapping (VectorMap District).
- Ordnance Survey 1km Grid and Grid References on each page enabling cross referencing with other Maps / Data.

## Suitability – High Level Overview.

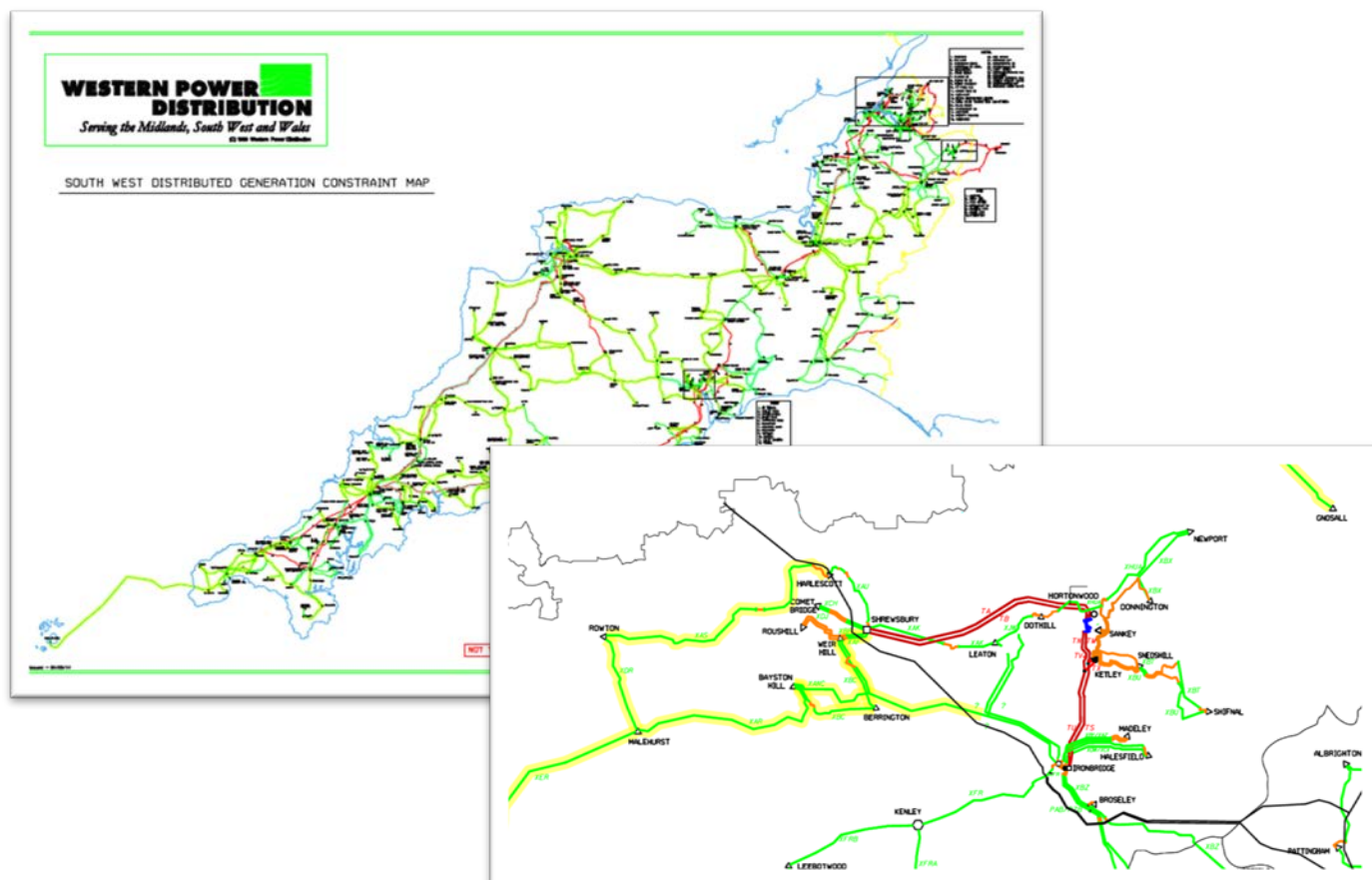


Provide a high level overview of the EHV network in each WPD DNO area.  
Supplied as A3 PDF maps.  
Data refreshed annually.

The benefits of this data are:

- Overhead conductors and Underground cables at 33kV+
- Position of BSP & GSP Substations.
- Supplied against simple outline mapping.

## Suitability – High Level Overview.



Provide a high level overview of Distributed Generation Constraints on the EHV network in each WPD DNO area.  
Supplied as A3 PDF maps.

Data refreshed as and when the network status changes.

The benefits of this data are:

- Overhead conductors and Underground cables at 33kV+
- Position of BSP & GSP Substations.
- Thermal and Voltage Constraints highlighted.
- Supplied against simple outline mapping.