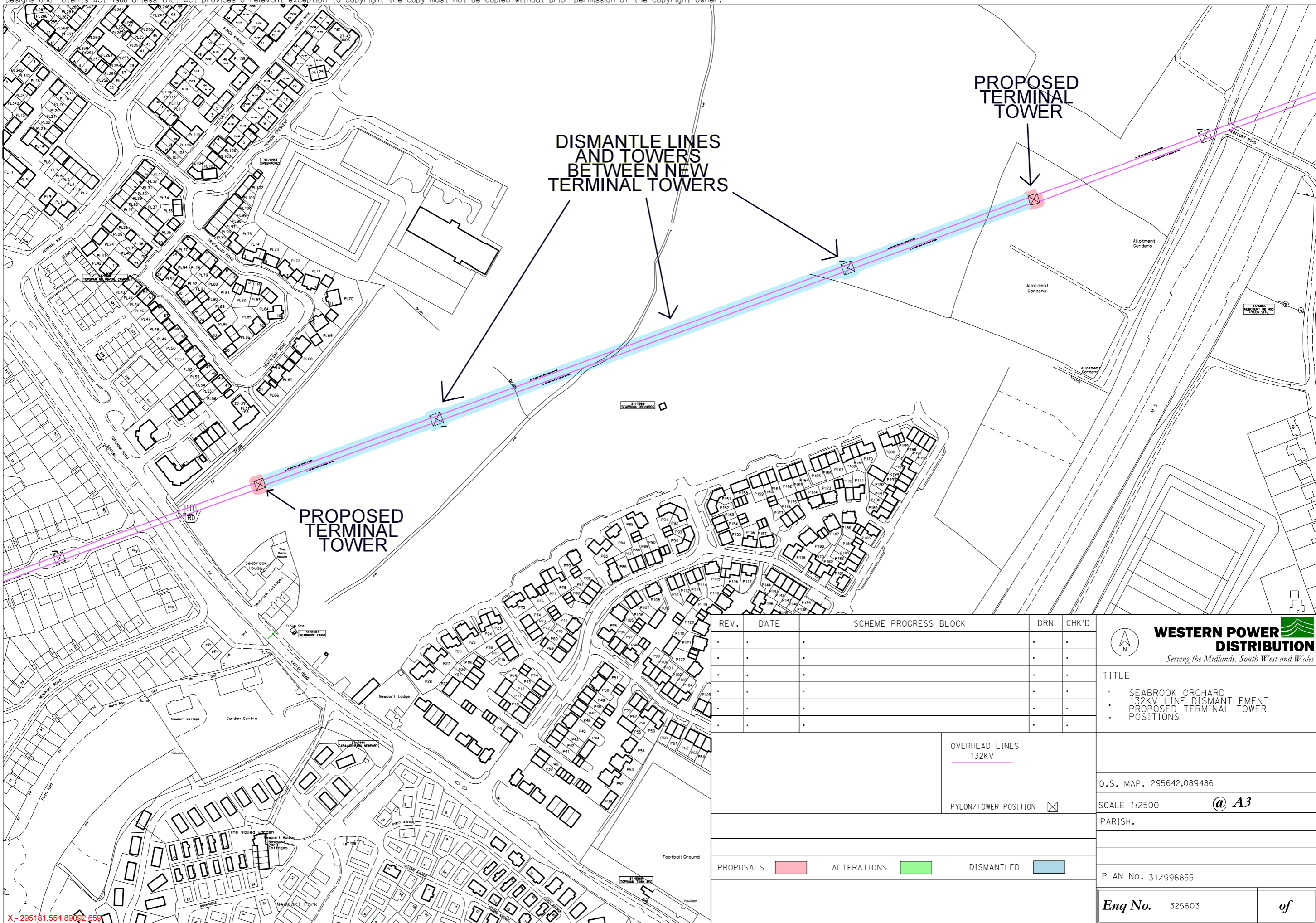


Information is given as a guide only and its accuracy cannot be guaranteed.

PLEASE NOTE: This plan ONLY shows assets owned by Western Power Distribution. Electricity assets owned by IDNO's (Independent Network Operators) MAY be present in this area.



REV.	DATE	SCHEME PROGRESS BLOCK	DRN	CHK'D
.
.
.
.
.
.

OVERHEAD LINES 132KV	
PYLON/TOWER POSITION	
PROPOSALS	
ALTERATIONS	
DISMANTLED	

WESTERN POWER DISTRIBUTION
Serving the Midlands, South West and Wales

TITLE
 • SEABROOK ORCHARD
 • 132KV LINE DISMANTLEMENT
 • PROPOSED TERMINAL TOWER POSITIONS

O.S. MAP. 295642.089486

SCALE 1:2500 @ A3

PARISH.

PLAN No. 31/996855

Enq No. 325603 of