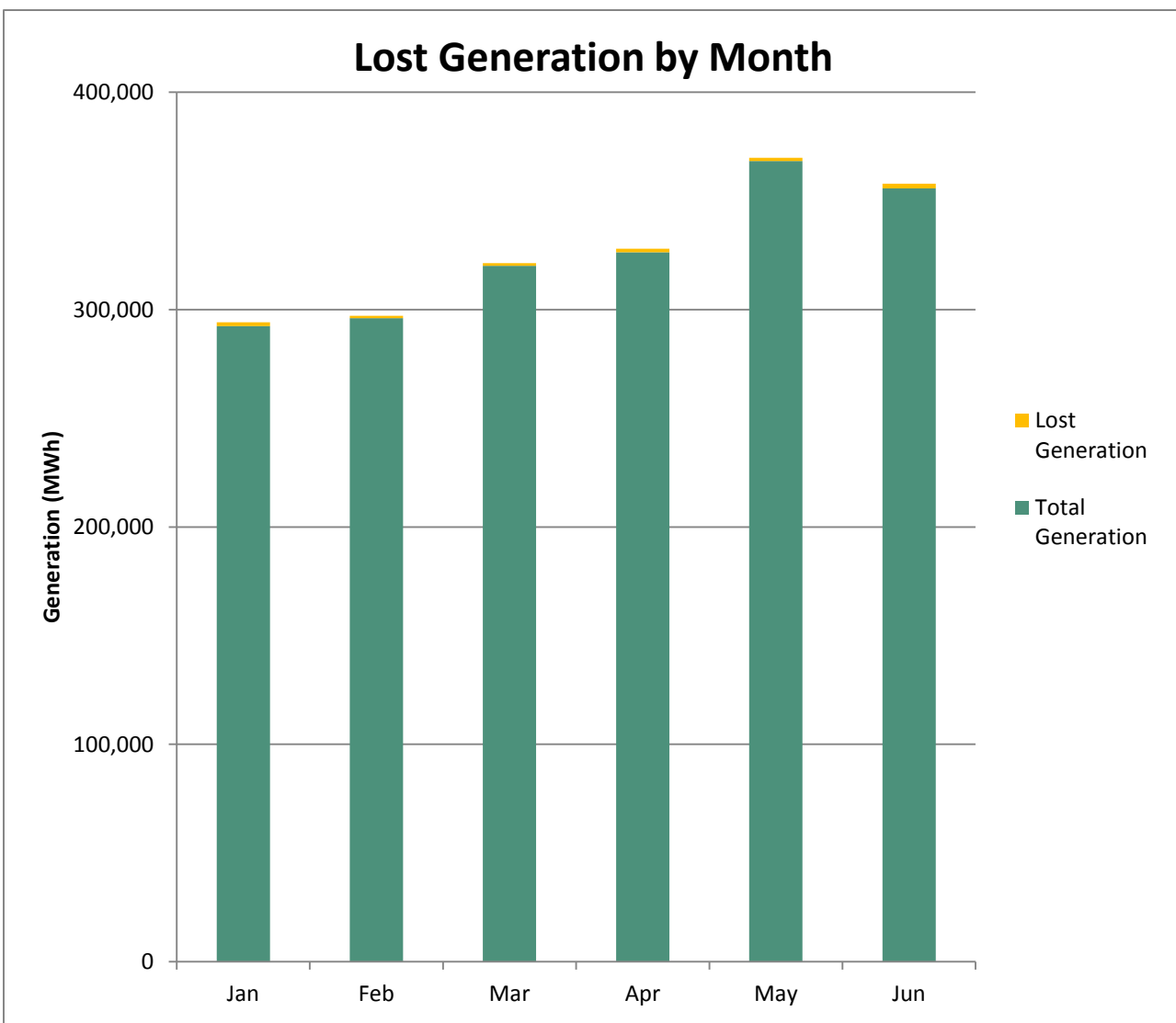


## Summary of lost generation January 2017 - June 2018

Criteria	Value
Total generation of all $\geq 33$ kV connected wind and solar sites (MWh)	1,603,589 MWh
Total lost generation of all $\geq 33$ kV connected wind and solar sites (MWh)	9,311 MWh
Percentage lost wind and solar generation as a result of network outages	0.58%

	Total Generation (MWh)	Lost Generation (MWh)	% Lost Generation
Jan	292,389	1,703	0.58%
Feb	295,977	1,148	0.39%
Mar	320,196	1,111	0.35%
Apr	326,374	1,669	0.51%
May	368,297	1,514	0.41%
Jun	355,663	2,166	0.61%

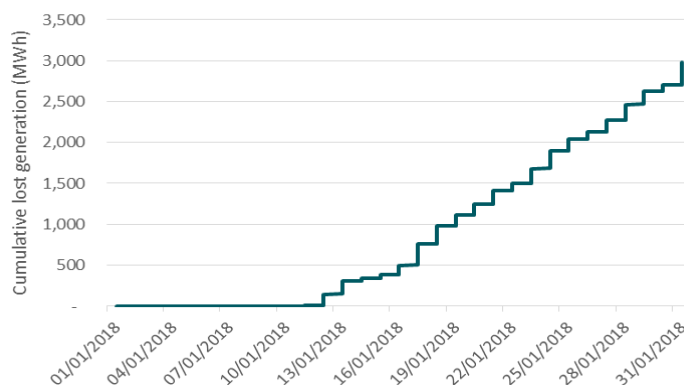


## January 2018

## Summary of lost generation as a proportion of all generation

Criteria	Value
Total generation of all >= 33 kV connected wind and solar sites (MWh)	292,389 MWh
Total lost generation of all >=33 kV connected wind and solar sites (MWh)	1,703 MWh
Percentage lost wind and solar generation as a result of network outages	0.58%

## Cumulative lost generation over monthly period for both onshore wind and photovoltaic



## Summary of lost generation, broken down by technology, outage reason, and licence area

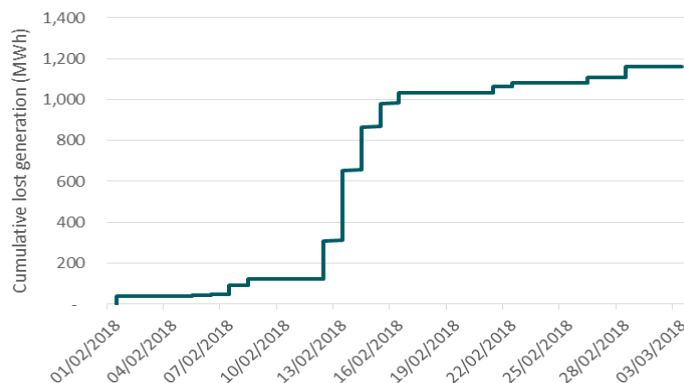
		Onshore wind lost generation (MWh)					Photovoltaic lost generation (MWh)					Total lost generation by outage reason
		South West	West Midlands	East Midlands	Wales	Total	South West	West Midlands	East Midlands	Wales	Total	
Outage reason	Cable Installation Works	-	-	-	-	-	-	-	-	-	-	-
	Cable Network Refurbishment	22	-	-	-	22	-	-	-	-	-	22
	Commissioning	-	-	-	-	-	-	-	-	-	-	-
	Fault	1268	-	-	-	1268	-	-	-	12	12	1280
	Information Booking	-	-	-	-	-	-	-	-	-	-	-
	Isolation of Customer's Equipment	-	-	-	45	45	-	-	-	-	-	45
	Maintenance at Substation	4	-	-	-	4	20	-	-	-	20	24
	Maintenance of Overhead Network	-	-	-	-	-	15	-	-	-	15	15
	National Grid Outage	279	-	-	-	279	-	-	-	-	-	279
	Non-WPD Outage	-	-	-	-	-	-	-	-	-	-	-
	Overhead Network Refurbishment	-	-	-	-	-	-	-	-	7	7	7
	Overhead Network Upgrade Works	-	-	-	-	-	-	-	-	-	-	-
	Overhead Tree Cutting	-	-	-	-	-	-	-	-	3	3	3
	Repair to Overhead Network	-	-	-	-	-	-	-	-	-	-	-
	Substation Installation Works	-	-	-	-	-	6	-	-	-	6	6
	Substation Plant Fault	-	-	-	-	-	9	-	-	-	9	9
		-	-	-	-	-	-	-	-	-	-	-
Total lost generation by licence area and technology		1573	-	-	45	1618	50	-	-	22	72	

## February 2018

## Summary of lost generation as a proportion of all generation

Criteria	Value
Total generation of all >= 33 kV connected wind and solar sites (MWh)	295,977 MWh
Total lost generation of all >=33 kV connected wind and solar sites (MWh)	1,148 MWh
Percentage lost wind and solar generation as a result of network outages	0.39%

## Cumulative lost generation over monthly period for both onshore wind and photovoltaic



## Summary of lost generation, broken down by technology, outage reason, and licence area

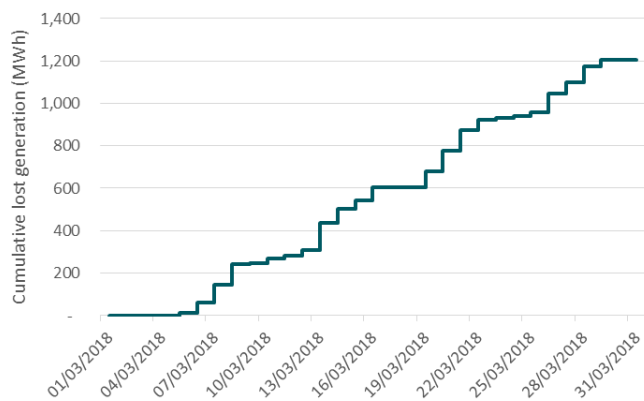
		Onshore wind lost generation (MWh)					Photovoltaic lost generation (MWh)					Total lost generation by outage reason
		South West	West Midlands	East Midlands	Wales	Total	South West	West Midlands	East Midlands	Wales	Total	
Outage reason	Cable Installation Works	-	-	-	-	-	-	-	-	-	-	-
	Cable Network Refurbishment	-	-	-	-	-	-	-	-	-	-	-
	Commissioning	-	-	-	-	-	-	-	-	-	-	-
	Fault	-	-	-	12	12	8	-	-	-	8	20
	Information Booking	-	-	-	-	-	-	-	-	-	-	-
	Isolation of Customer's Equipment	-	-	-	1	1	-	-	-	-	-	1
	Maintenance at Substation	12	-	-	500	512	79	-	-	-	79	592
	Maintenance of Overhead Network	-	-	-	-	-	15	-	-	-	15	15
	National Grid Outage	-	-	-	-	-	-	-	-	-	-	-
	Non-WPD Outage	-	-	-	-	-	-	-	-	-	-	-
	Overhead Network Refurbishment	1	-	-	393	394	40	-	-	-	40	434
	Overhead Network Upgrade Works	-	-	-	-	-	-	-	-	-	-	-
	Overhead Tree Cutting	-	-	-	-	-	-	-	-	-	-	-
	Repair to Overhead Network	-	-	-	-	-	-	-	-	-	-	-
	Substation Installation Works	33	-	-	-	33	23	-	-	7	30	63
	Substation Plant Fault	-	-	-	-	-	-	-	-	-	-	-
		-	-	-	-	-	-	-	-	-	-	-
Total lost generation by licence area and technology		46	-	-	907	953	165	-	-	7	171	

March 2018

## Summary of lost generation as a proportion of all generation

Criteria	Value
Total generation of all >= 33 kV connected wind and solar sites (MWh)	320,196 MWh
Total lost generation of all >=33 kV connected wind and solar sites (MWh)	1,111 MWh
Percentage lost wind and solar generation as a result of network outages	0.35%

## Cumulative lost generation over monthly period for both onshore wind and photovoltaic



## Summary of lost generation, broken down by technology, outage reason, and licence area

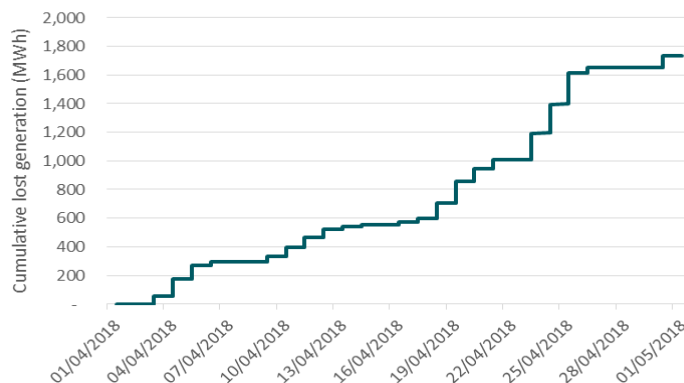
		Onshore wind lost generation (MWh)					Photovoltaic lost generation (MWh)					Total lost generation by outage reason
		South West	West Midlands	East Midlands	Wales	Total	South West	West Midlands	East Midlands	Wales	Total	
Outage reason	Cable Installation Works	-	-	-	-	-	-	-	-	-	-	-
	Cable Network Refurbishment	-	-	-	-	-	-	-	-	-	-	-
	Commissioning	-	-	-	-	-	-	-	-	-	-	-
	Fault	-	-	-	-	-	2	-	-	-	2	2
	Information Booking	-	-	-	-	-	-	-	-	-	-	-
	Isolation of Customer's Equipment	-	-	-	-	-	-	-	-	-	-	-
	Maintenance at Substation	-	-	-	-	-	60	-	-	62	122	122
	Maintenance of Overhead Network	-	-	-	34	34	13	-	-	-	13	46
	National Grid Outage	-	-	-	-	-	-	-	-	-	-	-
	Non-WPD Outage	-	-	-	-	-	-	-	-	-	-	-
	Overhead Network Refurbishment	-	-	-	7	7	-	-	-	20	20	27
	Overhead Network Upgrade Works	-	-	-	-	-	-	-	-	-	-	-
	Overhead Tree Cutting	-	-	50	-	50	-	-	-	-	-	50
	Repair to Overhead Network	-	-	-	-	-	-	-	-	-	-	-
	Substation Installation Works	43	-	-	-	43	634	-	-	126	760	803
	Substation Plant Fault	-	-	-	-	-	3	-	-	-	3	3
		-	-	-	-	-	-	-	-	-	-	-
Total lost generation by licence area and technology		43	-	50	41	134	712	-	-	208	920	

## April 2018

## Summary of lost generation as a proportion of all generation

Criteria	Value
Total generation of all >= 33 kV connected wind and solar sites (MWh)	326,374 MWh
Total lost generation of all >=33 kV connected wind and solar sites (MWh)	1,669 MWh
Percentage lost wind and solar generation as a result of network outages	0.51%

## Cumulative lost generation over monthly period for both onshore wind and photovoltaic



## Summary of lost generation, broken down by technology, outage reason, and licence area

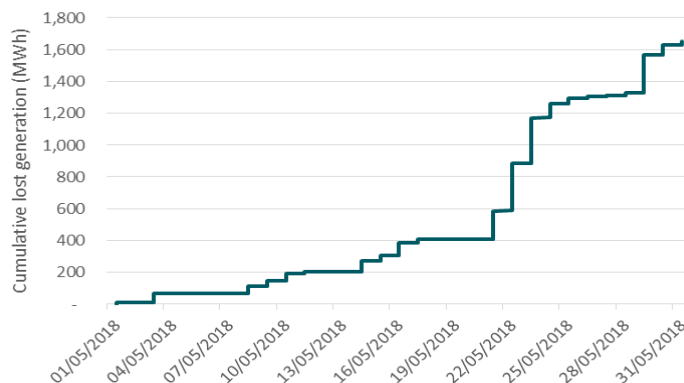
		Onshore wind lost generation (MWh)					Photovoltaic lost generation (MWh)					Total lost generation by outage reason
		South West	West Midlands	East Midlands	Wales	Total	South West	West Midlands	East Midlands	Wales	Total	
Outage reason	Cable Installation Works	-	-	-	-	-	-	-	-	-	-	-
	Cable Network Refurbishment	-	-	-	-	-	-	-	-	-	-	-
	Commissioning	-	-	-	-	-	6	-	-	-	6	6
	Fault	-	-	-	122	122	5	-	-	15	20	142
	Information Booking	-	-	-	-	-	-	-	-	-	-	-
	Isolation of Customer's Equipment	-	-	-	-	-	6	-	-	-	6	6
	Maintenance at Substation	0	-	-	397	397	-	-	-	146	146	544
	Maintenance of Overhead Network	-	-	-	-	-	137	-	-	-	137	137
	National Grid Outage	-	-	-	-	-	-	-	-	14	14	14
	Non-WPD Outage	-	-	-	-	-	-	-	-	-	-	-
	Overhead Network Refurbishment	58	-	-	-	58	85	-	-	90	175	233
	Overhead Network Upgrade Works	-	-	-	-	-	-	-	-	-	-	-
	Overhead Tree Cutting	-	-	-	-	-	-	-	-	-	-	-
	Repair to Overhead Network	-	-	-	-	-	-	-	-	-	-	-
	Substation Installation Works	63	-	-	-	63	90	-	-	242	331	394
	Substation Plant Fault	-	-	-	-	-	57	-	-	-	57	57
		-	-	-	-	-	-	-	-	-	-	-
Total lost generation by licence area and technology		121	-	-	520	641	386	-	-	506	893	

May 2018

## Summary of lost generation as a proportion of all generation

Criteria	Value
Total generation of all >= 33 kV connected wind and solar sites (MWh)	368,297 MWh
Total lost generation of all >=33 kV connected wind and solar sites (MWh)	1,514 MWh
Percentage lost wind and solar generation as a result of network outages	0.41%

## Cumulative lost generation over monthly period for both onshore wind and photovoltaic



## Summary of lost generation, broken down by technology, outage reason, and licence area

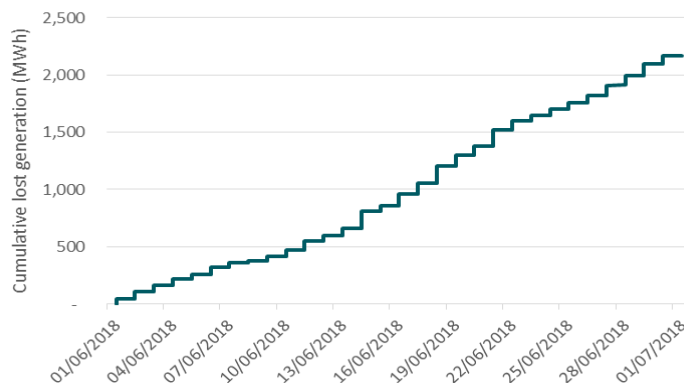
		Onshore wind lost generation (MWh)					Photovoltaic lost generation (MWh)					Total lost generation by outage reason
		South West	West Midlands	East Midlands	Wales	Total	South West	West Midlands	East Midlands	Wales	Total	
Outage reason	Cable Installation Works	-	-	-	-	-	-	-	-	-	-	-
	Cable Network Refurbishment	-	-	-	-	-	-	-	-	-	-	-
	Commissioning	-	-	-	-	-	-	-	-	-	-	-
	Fault	-	-	-	13	13	-	-	-	14	14	26
	Information Booking	-	-	-	-	-	-	-	-	-	-	-
	Isolation of Customer's Equipment	-	-	-	66	66	-	-	-	4	4	70
	Maintenance at Substation	-	-	0	126	127	324	-	-	24	348	474
	Maintenance of Overhead Network	-	-	-	-	-	45	-	-	128	173	173
	National Grid Outage	159	-	-	-	159	-	-	-	11	11	170
	Non-WPD Outage	-	-	-	-	-	-	-	-	-	-	-
	Overhead Network Refurbishment	-	-	-	49	49	8	-	-	28	36	85
	Overhead Network Upgrade Works	-	-	-	-	-	-	-	-	-	-	-
	Overhead Tree Cutting	-	-	-	-	-	-	-	-	-	-	-
	Repair to Overhead Network	0	-	-	-	0	-	-	-	-	-	0
	Substation Installation Works	-	-	-	-	-	73	-	-	388	461	461
	Substation Plant Fault	-	-	-	-	-	4	-	-	50	54	54
		-	-	-	-	-	-	-	-	-	-	-
Total lost generation by licence area and technology		159	-	0	254	414	454	-	-	646	1100	

June 2018

## Summary of lost generation as a proportion of all generation

Criteria	Value
Total generation of all >= 33 kV connected wind and solar sites (MWh)	355,663 MWh
Total lost generation of all >=33 kV connected wind and solar sites (MWh)	2,166 MWh
Percentage lost wind and solar generation as a result of network outages	0.61%

## Cumulative lost generation over monthly period for both onshore wind and photovoltaic



## Summary of lost generation, broken down by technology, outage reason, and licence area

		Onshore wind lost generation (MWh)					Photovoltaic lost generation (MWh)					Total lost generation by outage reason
		South West	West Midlands	East Midlands	Wales	Total	South West	West Midlands	East Midlands	Wales	Total	
Outage reason	Cable Installation Works	-	-	-	-	-	-	-	-	-	-	-
	Cable Network Refurbishment	-	-	-	-	-	-	-	-	-	-	-
	Commissioning	-	-	-	-	-	-	-	-	-	-	-
	Fault	-	-	-	-	-	-	-	-	-	-	-
	Information Booking	-	-	-	-	-	-	-	-	-	-	-
	Isolation of Customer's Equipment	-	-	-	-	-	-	-	-	-	-	-
	Maintenance at Substation	-	-	-	-	-	-	-	-	-	-	-
	Maintenance of Overhead Network	-	-	-	-	-	-	-	-	-	-	-
	National Grid Outage	1012	-	-	-	1012	-	-	-	-	-	1012
	Non-WPD Outage	-	-	-	-	-	-	-	-	-	-	-
	Overhead Network Refurbishment	-	-	-	-	-	-	-	-	1154	1154	1154
	Overhead Network Upgrade Works	-	-	-	-	-	-	-	-	-	-	-
	Overhead Tree Cutting	-	-	-	-	-	-	-	-	-	-	-
	Repair to Overhead Network	-	-	-	-	-	-	-	-	-	-	-
	Substation Installation Works	-	-	-	-	-	-	-	-	-	-	-
	Substation Plant Fault	-	-	-	-	-	-	-	-	-	-	-
Total lost generation by licence area and technology		1012	-	-	-	1012	-	-	-	1154	1154	