

CURTAILMENT ASSESSMENT REPORT – ENQUIRY REF.

Connection Request Summary

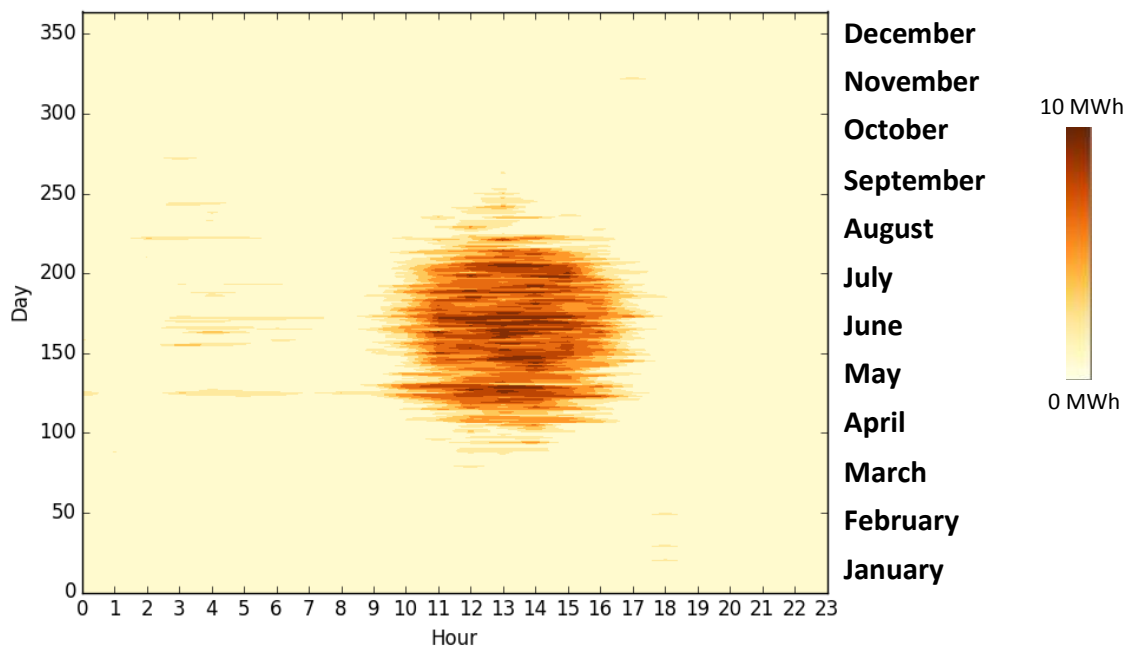
Enquiry Ref.	2701537
Connection request date and time	<dd-mm-yyyy hh:mm:ss>
DG type	Other
Capacity	10 MW
ANM system	Alverdiscott

Curtailement Report Summary

1. Estimated energy curtailed over a 12-month period: **4787 MWh**
2. Your generator will hold the following LIFO position: **16**
3. The following generation is above you in the LIFO queue:

Generation Type	Generation Capacity (MW)	Number of Connections
Wind	5.4	4
Solar	9	3
Synchronous/Other	132.9	8

4. Contour plot of curtailed energy over an average 12-month period:



Curtailment Report Further Detail

	2014	2013
Max MW	10.0	10.0
Min MW	0	0
Average MW	9.4	9.5
Energy MWh	82488	83133
Curtailed Volume MWh	5107	4467
Capacity Factor %	94%	95%

Figure 1 – Yearly Curtailment Assessment Results

	Apr-13	May-13	Jun-13	Jul-13	Aug-13	Sep-13	Oct-13	Nov-13	Dec-13	Jan-14	Feb-14	Mar-14	Apr-14	May-14	Jun-14	Jul-14	Aug-14	Sep-14	Oct-14	Nov-14	Dec-14	Jan-15	Feb-15	Mar-15
Predicted Maximum Output (MWh)	7200	7440	7200	7440	7440	7200	7440	7200	7440	7440	6720	7440	7200	7440	7200	7440	7440	7200	7440	7200	7440	7440	6720	7435
Curtailed Volume (MWh)	286	1318	1362	1146	250	66	0	5	0	10	0	25	444	1059	1606	1326	481	120	25	0	0	0	5	41
Uncurtailed Output (MWh)	6914	6122	5838	6294	7190	7134	7440	7195	7440	7430	6720	7415	6756	6381	5594	6114	6959	7080	7415	7200	7440	7440	6715	7394

Table 1 - Calculated Curtailment Volumes by Month Table

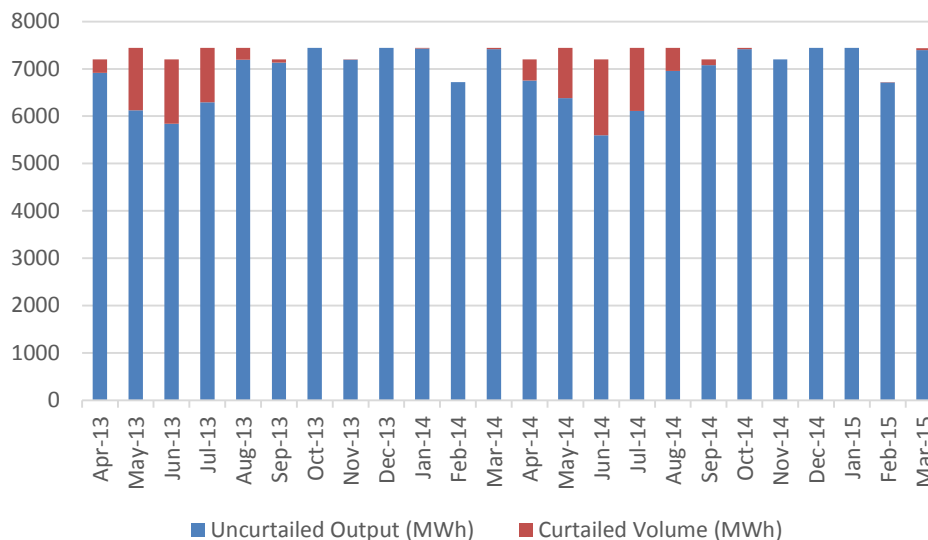


Figure 2 – Calculated Curtailed Volumes by Month Graph

For the avoidance of doubt, WPD does not guarantee any level of duration or frequency of curtailment or constraints. The Customer is strongly encouraged to conduct their own assessment of the potential curtailments / constraints and risk associated with an alternative connection.