

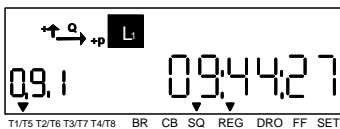


Reading the Iskraemeco ME372 Meter

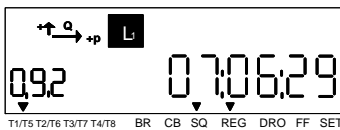
The Iskraemeco MT372 single phase meter is read automatically each night. You can still check the reads manually on the display anytime you wish. This document explains the display sequence.

The display scrolls automatically without the need to press any buttons on the meter.

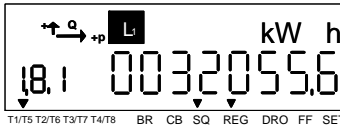
LCD Display



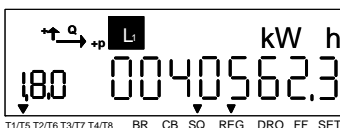
0.9.1 Current Time (BST or GMT depending on tariff)



0.9.2 Current Date YY:MM:DD



1.8.1 R1 kWh; 1.8.2 (R2), 1.8.3 (R3), etc. may follow



1.8.0 Total Import kWh

... other displays may follow before returning to the current time