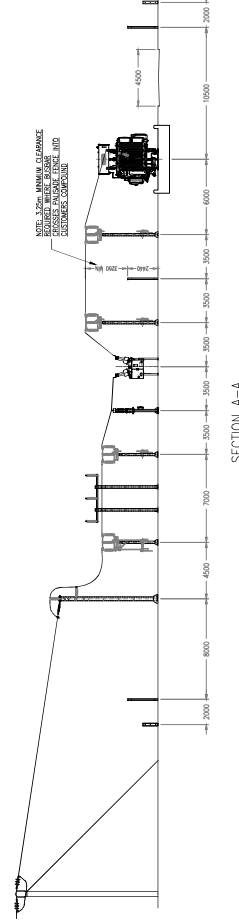
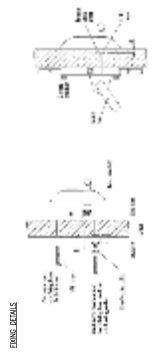


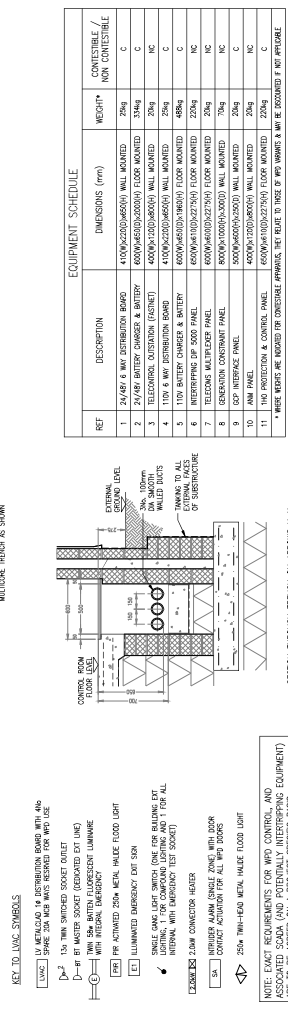
WPD CONTROL ROOM DETAILS (1:25)



SECTION A-A

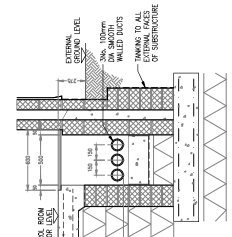


DOOR SET & LOCKING DETAILS



EQUIPMENT SCHEDULE			WEIGHT	CONTAINER/ NON CONTAINER
REF	DESCRIPTION	DIMENSIONS (mm)		
1	24VDC 1 MW GENERATION BOARD	4000x700x200(450) WALL MOUNTED	25kg	C
2	24VDC 1 MW GENERATION & BATTERY	4000x700x200(450) 1100 WALL MOUNTED	334kg	C
3	TELECOMM. OUTCLOCK (4x32IN)	4000x700(800) WALL MOUNTED	20kg	NC
4	110V 1 MW DISTRIBUTION BOARD	4000x700(800) WALL MOUNTED	45kg	C
5	110V BATTERY CHARGE & BATTERY	6000x1100(1275)H WALL MOUNTED	298kg	C
6	REDUNDANT 8V 5000 PANEL	6000x1100(1275)H 1100 WALL MOUNTED	25kg	NC
7	REDUNDANT MULTIDROP PANEL	6000x1100(1275)H 1100 WALL MOUNTED	25kg	NC
8	8V INTERFACE PANEL	6000x1100(1275)H WALL MOUNTED	25kg	NC
9	AMP PANEL	4000x700(800) WALL MOUNTED	20kg	C
10	AMP PANEL	4000x700(800) WALL MOUNTED	20kg	C
11	110V PROTECTION & CONTROL PANEL	6000x1100(1275)H 1100 WALL MOUNTED	25kg	NC

* WHERE WEIGHTS ARE INDICATED FOR CONTAINER/PANELS, THEY RELATE TO THE 20' HIGH Pallet WEIGHT & ARE 2500kg



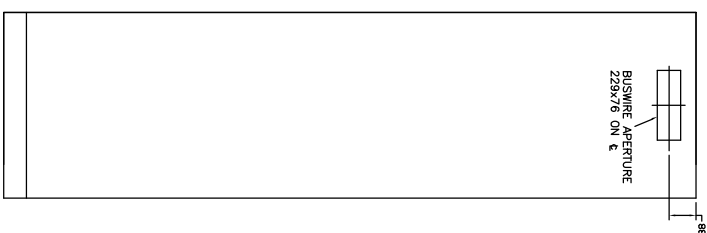
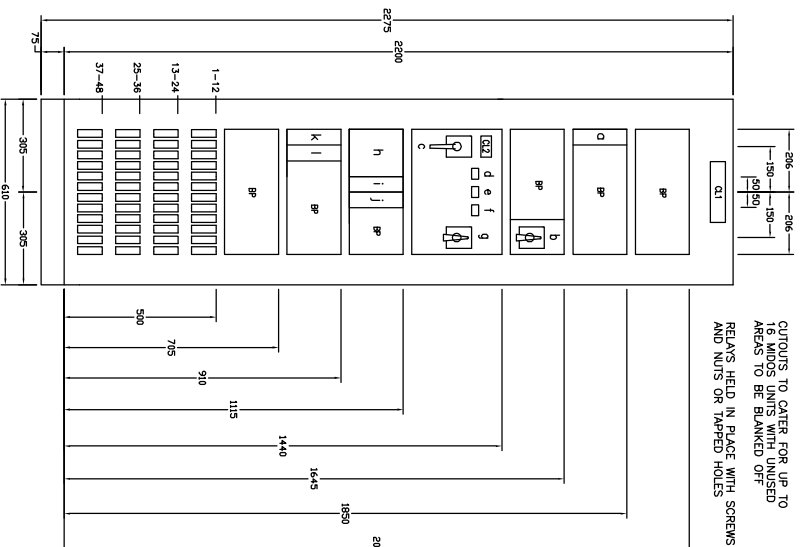
ASSOCIATED SCADA (AND POTENTIALLY INTERTRIPPING EQUIPMENT) ARE TO BE AGREED ON A PROJECT SPECIFIC BASIS

GENERAL NOTES

- [illegible]

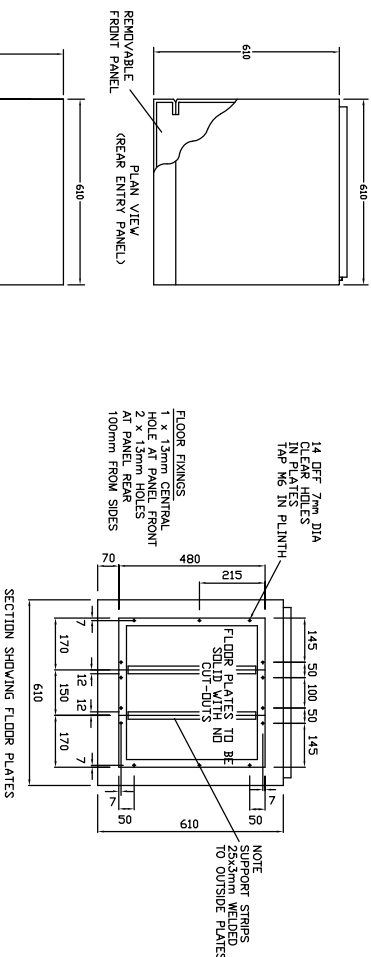
Drawn	Date	App'd	Date	Revision	SCALE: AS NOTED DRAWING SHEET SIZE: A1	SOALE: PROPOSED SITE LAYOUT & WPD CONTROL ROAD DETAILS	THE INDICATE NEW REMOVED &/OR EXIST CONSTRUCTION (LOOP N)	WESTERN POWER DISTRIBUTION Design Department 10000 Highway 100, Box 892, OTB Avenbank, P.O. Box 100 Tel: 0117 933 2000 Fax: 0117 933 2001	Rev. No. 0	Proj. No. GC50022-1
-------	------	-------	------	----------	---	---	--	---	------------	---------------------

Als eerste toe werden in deze $H_{2,1}$ deelt als een rijge en vier regelde liden de symmetrieen in die regel en de liden



REF	DESCRIPTION	CISE SIZE
b	CB 575 GAS PRESSURE LOW & LOCKOUT ALARM INDICATION RELAY	
c	ASTOM MVA21 R1400755 (2M, 2B)	M2
d	AC/DC INDICATION SELECTOR SWITCH (OFF AC/DC)	
e	CBMG & DERBROUOT R03234/2/NC/N/LHD (4B MFD)	
f	CB CONTROL SWITCH - POSTAL (CBP) (NORMAL/CLOSE)	
g	CBMG & DERBROUOT R03232/3R/NC/V LHD	
h	CB OPEN INDICATION LAMP (GREEN)	
i	DAQ (REF I3.5) APPENDIX C, EE SPEC. 136)	
j	CB CLOSED INDICATION LAMP (RED)	
k	CB OPEN INDICATION LAMP (RED)	
l	CB SPRINGS CHARGED INDICATION LAMP (BLUE)	
m	DAQ (REF I3.5) APPENDIX C, EE SPEC. 136)	
n	REMOTE/SUPERVISORY SELECTOR SWITCH (FHD/SUP)	
o	CBMG & DERBROUOT R03262/2/NC/N/LHD	
p	DIRECTIONAL, OC & EF RELAY WITH SHCO, 3000T, 100T, 300T, 6T & M20	30TE
q	ASTOM M41E F40002/C00500A4	
r	TEST TERMINAL BLOCK 11B1 FOR P140	
s	ASTOM M4002	M2
t	TEST TERMINAL BLOCK 11B2 FOR WFT	
u	ASTOM M4002	M2
v	TIME DELAY RESET TMR RELAY	
w	ASTOM M4010Z R04082 (8M, 2B)	M2
x	CUSTOMER TRIP RECEIVE INDICATION RELAY	
y	ASTOM M40A	M2
z	AMPERE/VOLTAGE/WATT/VA MULTIFUNCTION TRANSDUCER	
aa	CB GROUND SOLUTIONS ISM2H2011NCILLARY	INTERNAL
ab	ARCHIVE R0-2501 48V DC (SOCKET IN DE P110)	INTERNAL
ac	ARCHIVE R0-2501 48V DC (SOCKET IN DE P110)	INTERNAL
ad	ARCHIVE R0-2501 48V DC (SOCKET IN DE P110)	INTERNAL
ae	ARCHIVE R0-2501 48V DC (SOCKET IN DE P110)	INTERNAL
af	ARCHIVE R0-2501 48V DC (SOCKET IN DE P110)	INTERNAL
ag	ARCHIVE R0-2501 48V DC (SOCKET IN DE P110)	INTERNAL
ah	ARCHIVE R0-2501 48V DC (SOCKET IN DE P110)	INTERNAL
ai	ARCHIVE R0-2501 48V DC (SOCKET IN DE P110)	INTERNAL
aj	ARCHIVE R0-2501 48V DC (SOCKET IN DE P110)	INTERNAL
ak	ARCHIVE R0-2501 48V DC (SOCKET IN DE P110)	INTERNAL
al	ARCHIVE R0-2501 48V DC (SOCKET IN DE P110)	INTERNAL
am	ARCHIVE R0-2501 48V DC (SOCKET IN DE P110)	INTERNAL
an	ARCHIVE R0-2501 48V DC (SOCKET IN DE P110)	INTERNAL
ao	ARCHIVE R0-2501 48V DC (SOCKET IN DE P110)	INTERNAL
ap	ARCHIVE R0-2501 48V DC (SOCKET IN DE P110)	INTERNAL
aq	ARCHIVE R0-2501 48V DC (SOCKET IN DE P110)	INTERNAL
ar	ARCHIVE R0-2501 48V DC (SOCKET IN DE P110)	INTERNAL
as	ARCHIVE R0-2501 48V DC (SOCKET IN DE P110)	INTERNAL
at	ARCHIVE R0-2501 48V DC (SOCKET IN DE P110)	INTERNAL
au	ARCHIVE R0-2501 48V DC (SOCKET IN DE P110)	INTERNAL
av	ARCHIVE R0-2501 48V DC (SOCKET IN DE P110)	INTERNAL
aw	ARCHIVE R0-2501 48V DC (SOCKET IN DE P110)	INTERNAL
ax	ARCHIVE R0-2501 48V DC (SOCKET IN DE P110)	INTERNAL
ay	ARCHIVE R0-2501 48V DC (SOCKET IN DE P110)	INTERNAL
az	ARCHIVE R0-2501 48V DC (SOCKET IN DE P110)	INTERNAL
ba	ARCHIVE R0-2501 48V DC (SOCKET IN DE P110)	INTERNAL
bb	ARCHIVE R0-2501 48V DC (SOCKET IN DE P110)	INTERNAL
bc	ARCHIVE R0-2501 48V DC (SOCKET IN DE P110)	INTERNAL
bd	ARCHIVE R0-2501 48V DC (SOCKET IN DE P110)	INTERNAL
be	ARCHIVE R0-2501 48V DC (SOCKET IN DE P110)	INTERNAL
bf	ARCHIVE R0-2501 48V DC (SOCKET IN DE P110)	INTERNAL
bg	ARCHIVE R0-2501 48V DC (SOCKET IN DE P110)	INTERNAL
bh	ARCHIVE R0-2501 48V DC (SOCKET IN DE P110)	INTERNAL
bi	ARCHIVE R0-2501 48V DC (SOCKET IN DE P110)	INTERNAL
bj	ARCHIVE R0-2501 48V DC (SOCKET IN DE P110)	INTERNAL
bk	ARCHIVE R0-2501 48V DC (SOCKET IN DE P110)	INTERNAL
bl	ARCHIVE R0-2501 48V DC (SOCKET IN DE P110)	INTERNAL
bm	ARCHIVE R0-2501 48V DC (SOCKET IN DE P110)	INTERNAL
bn	ARCHIVE R0-2501 48V DC (SOCKET IN DE P110)	INTERNAL
bo	ARCHIVE R0-2501 48V DC (SOCKET IN DE P110)	INTERNAL
bp	ARCHIVE R0-2501 48V DC (SOCKET IN DE P110)	INTERNAL
bq	ARCHIVE R0-2501 48V DC (SOCKET IN DE P110)	INTERNAL
br	ARCHIVE R0-2501 48V DC (SOCKET IN DE P110)	INTERNAL
bs	ARCHIVE R0-2501 48V DC (SOCKET IN DE P110)	INTERNAL
bt	ARCHIVE R0-2501 48V DC (SOCKET IN DE P110)	INTERNAL
bu	ARCHIVE R0-2501 48V DC (SOCKET IN DE P110)	INTERNAL
bv	ARCHIVE R0-2501 48V DC (SOCKET IN DE P110)	INTERNAL
bw	ARCHIVE R0-2501 48V DC (SOCKET IN DE P110)	INTERNAL
bx	ARCHIVE R0-2501 48V DC (SOCKET IN DE P110)	INTERNAL
by	ARCHIVE R0-2501 48V DC (SOCKET IN DE P110)	INTERNAL
bz	ARCHIVE R0-2501 48V DC (SOCKET IN DE P110)	INTERNAL
ca	ARCHIVE R0-2501 48V DC (SOCKET IN DE P110)	INTERNAL
cb	ARCHIVE R0-2501 48V DC (SOCKET IN DE P110)	INTERNAL
cc	ARCHIVE R0-2501 48V DC (SOCKET IN DE P110)	INTERNAL
cd	ARCHIVE R0-2501 48V DC (SOCKET IN DE P110)	INTERNAL
ce	ARCHIVE R0-2501 48V DC (SOCKET IN DE P110)	INTERNAL
cf	ARCHIVE R0-2501 48V DC (SOCKET IN DE P110)	INTERNAL
cg	ARCHIVE R0-2501 48V DC (SOCKET IN DE P110)	INTERNAL
ch	ARCHIVE R0-2501 48V DC (SOCKET IN DE P110)	INTERNAL
ci	ARCHIVE R0-2501 48V DC (SOCKET IN DE P110)	INTERNAL
cj	ARCHIVE R0-2501 48V DC (SOCKET IN DE P110)	INTERNAL
ck	ARCHIVE R0-2501 48V DC (SOCKET IN DE P110)	INTERNAL
cl	ARCHIVE R0-2501 48V DC (SOCKET IN DE P110)	INTERNAL
cm	ARCHIVE R0-2501 48V DC (SOCKET IN DE P110)	INTERNAL
cn	ARCHIVE R0-2501 48V DC (SOCKET IN DE P110)	INTERNAL
co	ARCHIVE R0-2501 48V DC (SOCKET IN DE P110)	INTERNAL
cp	ARCHIVE R0-2501 48V DC (SOCKET IN DE P110)	INTERNAL
cq	ARCHIVE R0-2501 48V DC (SOCKET IN DE P110)	INTERNAL
cr	ARCHIVE R0-2501 48V DC (SOCKET IN DE P110)	INTERNAL
cs	ARCHIVE R0-2501 48V DC (SOCKET IN DE P110)	INTERNAL
ct	ARCHIVE R0-2501 48V DC (SOCKET IN DE P110)	INTERNAL
cu	ARCHIVE R0-2501 48V DC (SOCKET IN DE P110)	INTERNAL
cv	ARCHIVE R0-2501 48V DC (SOCKET IN DE P110)	INTERNAL
cw	ARCHIVE R0-2501 48V DC (SOCKET IN DE P110)	INTERNAL
cx	ARCHIVE R0-2501 48V DC (SOCKET IN DE P110)	INTERNAL
cy	ARCHIVE R0-2501 48V DC (SOCKET IN DE P110)	INTERNAL
cz	ARCHIVE R0-2501 48V DC (SOCKET IN DE P110)	INTERNAL
da	ARCHIVE R0-2501 48V DC (SOCKET IN DE P110)	INTERNAL
db	ARCHIVE R0-2501 48V DC (SOCKET IN DE P110)	INTERNAL
dc	ARCHIVE R0-2501 48V DC (SOCKET IN DE P110)	INTERNAL
dd	ARCHIVE R0-2501 48V DC (SOCKET IN DE P110)	INTERNAL
de	ARCHIVE R0-2501 48V DC (SOCKET IN DE P110)	INTERNAL
df	ARCHIVE R0-2501 48V DC (SOCKET IN DE P110)	INTERNAL
dg	ARCHIVE R0-2501 48V DC (SOCKET IN DE P110)	INTERNAL
dh	ARCHIVE R0-2501 48V DC (SOCKET IN DE P110)	INTERNAL
di	ARCHIVE R0-2501 48V DC (SOCKET IN DE P110)	INTERNAL
dj	ARCHIVE R0-2501 48V DC (SOCKET IN DE P110)	INTERNAL
dk	ARCHIVE R0-2501 48V DC (SOCKET IN DE P110)	INTERNAL
dl	ARCHIVE R0-2501 48V DC (SOCKET IN DE P110)	INTERNAL
dm	ARCHIVE R0-2501 48V DC (SOCKET IN DE P110)	INTERNAL
dn	ARCHIVE R0-2501 48V DC (SOCKET IN DE P110)	INTERNAL
do	ARCHIVE R0-2501 48V DC (SOCKET IN DE P110)	INTERNAL
dp	ARCHIVE R0-2501 48V DC (SOCKET IN DE P110)	INTERNAL
dq	ARCHIVE R0-2501 48V DC (SOCKET IN DE P110)	INTERNAL
dr	ARCHIVE R0-2501 48V DC (SOCKET IN DE P110)	INTERNAL
ds	ARCHIVE R0-2501 48V DC (SOCKET IN DE P110)	INTERNAL
dt	ARCHIVE R0-2501 48V DC (SOCKET IN DE P110)	INTERNAL
du	ARCHIVE R0-2501 48V DC (SOCKET IN DE P110)	INTERNAL
dv	ARCHIVE R0-2501 48V DC (SOCKET IN DE P110)	INTERNAL
dw	ARCHIVE R0-2501 48V DC (SOCKET IN DE P110)	INTERNAL
dx	ARCHIVE R0-2501 48V DC (SOCKET IN DE P110)	INTERNAL
dy	ARCHIVE R0-2501 48V DC (SOCKET IN DE P110)	INTERNAL
dz	ARCHIVE R0-2501 48V DC (SOCKET IN DE P110)	INTERNAL
ea	ARCHIVE R0-2501 48V DC (SOCKET IN DE P110)	INTERNAL
eb	ARCHIVE R0-2501 48V DC (SOCKET IN DE P110)	INTERNAL
ec	ARCHIVE R0-2501 48V DC (SOCKET IN DE P110)	INTERNAL
ed	ARCHIVE R0-2501 48V DC (SOCKET IN DE P110)	INTERNAL
ee	ARCHIVE R0-2501 48V DC (SOCKET IN DE P110)	INTERNAL
ef	ARCHIVE R0-2501 48V DC (SOCKET IN DE P110)	INTERNAL
eg	ARCHIVE R0-2501 48V DC (SOCKET IN DE P110)	INTERNAL
eh	ARCHIVE R0-2501 48V DC (SOCKET IN DE P110)	INTERNAL
ei	ARCHIVE R0-2501 48V DC (SOCKET IN DE P110)	INTERNAL
ej	ARCHIVE R0-2501 48V DC (SOCKET IN DE P110)	INTERNAL
ek	ARCHIVE R0-2501 48V DC (SOCKET IN DE P110)	INTERNAL
el	ARCHIVE R0-2501 48V DC (SOCKET IN DE P110)	INTERNAL
em	ARCHIVE R0-2501 48V DC (SOCKET IN DE P110)	INTERNAL
en	ARCHIVE R0-2501 48V DC (SOCKET IN DE P110)	INTERNAL
eo	ARCHIVE R0-2501 48V DC (SOCKET IN DE P110)	INTERNAL
ep	ARCHIVE R0-2501 48V DC (SOCKET IN DE P110)	INTERNAL
eq	ARCHIVE R0-2501 48V DC (SOCKET IN DE P110)	INTERNAL
er	ARCHIVE R0-2501 48V DC (SOCKET IN DE P110)	INTERNAL
es	ARCHIVE R0-2501 48V DC (SOCKET IN DE P110)	INTERNAL
et	ARCHIVE R0-2501 48V DC (SOCKET IN DE P110)	INTERNAL
eu	ARCHIVE R0-2501 48V DC (SOCKET IN DE P110)	INTERNAL
ev	ARCHIVE R0-2501 48V DC (SOCKET IN DE P110)	INTERNAL
ew	ARCHIVE R0-2501 48V DC (SOCKET IN DE P110)	INTERNAL
ex	ARCHIVE R0-2501 48V DC (SOCKET IN DE P110)	INTERNAL
ey	ARCHIVE R0-2501 48V DC (SOCKET IN DE P110)	INTERNAL
ez	ARCHIVE R0-2501 48V DC (SOCKET IN DE P110)	INTERNAL
fa	ARCHIVE R0-2501 48V DC (SOCKET IN DE P110)	INTERNAL
fb	ARCHIVE R0-2501 48V DC (SOCKET IN DE P110)	INTERNAL
fc	ARCHIVE R0-2501 48V DC (SOCKET IN DE P110)	INTERNAL
fd	ARCHIVE R0-2501 48V DC (SOCKET IN DE P110)	INTERNAL
fe	ARCHIVE R0-2501 48V DC (SOCKET IN DE P110)	INTERNAL
ff	ARCHIVE R0-2501 48V DC (SOCKET IN DE P110)	INTERNAL
fg	ARCHIVE R0-2501 48V DC (SOCKET IN DE P110)	INTERNAL
fh	ARCHIVE R0-2501 48V DC (SOCKET IN DE P110)	INTERNAL
fi	ARCHIVE R0-2501 48V DC (SOCKET IN DE P110)	INTERNAL
fj	ARCHIVE R0-2501 48V DC (SOCKET IN DE P110)	INTERNAL
fk	ARCHIVE R0-2501 48V DC (SOCKET IN DE P110)	INTERNAL
fl	ARCHIVE R0-2501 48V DC (SOCKET IN DE P110)	INTERNAL
fm	ARCHIVE R0-2501 48V DC (SOCKET IN DE P110)	INTERNAL
fn	ARCHIVE R0-2501 48V DC (SOCKET IN DE P110)	INTERNAL
fo	ARCHIVE R0-2501 48V DC (SOCKET IN DE P110)	INTERNAL
fp	ARCHIVE R0-2501 48V DC (SOCKET IN DE P110)	INTERNAL
fq	ARCHIVE R0-2501 48V DC (SOCKET IN DE P110)	INTERNAL
fr	ARCHIVE R0-2501 48V DC (SOCKET IN DE P110)	INTERNAL
fs	ARCHIVE R0-2501 48V DC (SOCKET IN DE P110)	INTERNAL
ft	ARCHIVE R0-2501 48V DC (SOCKET IN DE P110)	INTERNAL
fu	ARCHIVE R0-2501 48V DC (SOCKET IN DE P110)	INTERNAL
fv	ARCHIVE R0-2501 48V DC (SOCKET IN DE P110)	INTERNAL
fw	ARCHIVE R0-2501 48V DC (SOCKET IN DE P110)	INTERNAL
fx	ARCHIVE R0-2501 48V DC (SOCKET IN DE P110)	INTERNAL
fy	ARCHIVE R0-2501 48V DC (SOCKET IN DE P110)	INTERNAL
fz	ARCHIVE R0-2501 48V DC (SOCKET IN DE P110)	INTERNAL
ga	ARCHIVE R0-2501 48V DC (SOCKET IN DE P110)	INTERNAL
gb	ARCHIVE R0-2501 48V DC (SOCKET IN DE P110)	INTERNAL
gc	ARCHIVE R0-2501 48V DC (SOCKET IN DE P110)	INTERNAL
gd	ARCHIVE R0-2501 48V DC (SOCKET IN DE P110)	INTERNAL
ge	ARCHIVE R0-2501 48V DC (SOCKET IN DE P110)	INTERNAL
gf	ARCHIVE R0-2501 48V DC (SOCKET IN DE P110)	INTERNAL
gg	ARCHIVE R0-2501 48V DC (SOCKET IN DE P110)	INTERNAL
gh	ARCHIVE R0-2501 48V DC (SOCKET IN DE P110)	INTERNAL
gi	ARCHIVE R0-2501 48V DC (SOCKET IN DE P110)	INTERNAL
gj	ARCHIVE R0-2501 48V DC (SOCKET IN DE P110)	INTERNAL
gk	ARCHIVE R0-2501 48V DC (SOCKET IN DE P110)	INTERNAL
gl	ARCHIVE R0-2501 48V DC (SOCKET IN DE P110)	INTERNAL
gm	ARCHIVE R0-2501 48V DC (SOCKET IN DE P110)	INTERNAL
gn	ARCHIVE R0-2501 48V DC (SOCKET IN DE P110)	INTERNAL
go	ARCHIVE R0-2501 48V DC (SOCKET IN DE P110)	INTERNAL
gp	ARCHIVE R0-2501 48V DC (SOCKET IN DE P110)	INTERNAL
gq	ARCHIVE R0-2501 48V DC (SOCKET IN DE P110)	INTERNAL
gr	ARCHIVE R0-2501 48V DC (SOCKET IN DE P110)	INTERNAL
gs	ARCHIVE R0-2501 48V DC (SOCKET IN DE P110)	INTERNAL
gt	ARCHIVE R0-2501 48V DC (SOCKET IN DE P110)	INTERNAL
gu	ARCHIVE R0-2501 48V DC (SOCKET IN DE P110)	INTERNAL
gv	ARCHIVE R0-2501 48V DC (SOCKET IN DE P110)	INTERNAL
gw	ARCHIVE R0-2501 48V DC (SOCKET IN DE P110)	INTERNAL
gx	ARCHIVE R0-2501 48V DC (SOCKET IN DE P110)	INTERNAL
gy	ARCHIVE R0-2501 48V DC (SOCKET IN DE P110)	INTERNAL
gz	ARCHIVE R0-2501 48V DC (SOCKET IN DE P110)	INTERNAL
ha	ARCHIVE R0-2501 48V DC (SOCKET IN DE P110)	INTERNAL
hb	ARCHIVE R0-2501 48V DC (SOCKET IN DE P110)	INTERNAL
hc	ARCHIVE R0-2501 48V DC (SOCKET IN DE P110)	INTERNAL
hd	ARCHIVE R0-2501 48V DC (SOCKET IN DE P110)	INTERNAL
he	ARCHIVE R0-2501 48V DC (SOCKET IN DE P110)	INTERNAL
hf	ARCHIVE R0-2501 48V DC (SOCKET IN DE P110)	INTERNAL
hg	ARCHIVE R0-2501 48V DC (SOCKET IN DE P110)	INTERNAL
hh	ARCHIVE R0-2501 48V DC (SOCKET IN DE P110)	INTERNAL
hi	ARCHIVE R0-2501 48V DC (SOCKET IN DE P110)	INTERNAL
hj	ARCHIVE R0-2501 48V DC (SOCKET IN DE P110)	INTERNAL
hk	ARCHIVE R0-2501 48V DC (SOCKET IN DE P110)	INTERNAL
hl	ARCHIVE R0-2501 48V DC (SOCKET IN DE P110)	INTERNAL
hm	ARCHIVE R0-2501 48V DC (SOCKET IN DE P110)	INTERNAL
hn	ARCHIVE R0-2501 48V DC (SOCKET IN DE P110)	INTERNAL
ho	ARCHIVE R0-2501 48V DC (SOCKET IN DE P110)	INTERNAL
hp	ARCHIVE R0-2501 48V DC (SOCKET IN DE P110)	INTERNAL
hq	ARCHIVE R0-2501 48V DC (SOCKET IN DE P110)	INTERNAL
hr	ARCHIVE R0-2501 48V DC (SOCKET IN DE P110)	INTERNAL
hs	ARCHIVE R0-2501 48V DC (SOCKET IN DE P110)	INTERNAL
ht	ARCHIVE R0-2501 48V DC (SOCKET IN DE P110)	INTERNAL
hu	ARCHIVE R0-2501 48V DC (SOCKET IN DE P110)	INTERNAL
hv	ARCHIVE R0-2501 48V DC (SOCKET IN DE P110)	INTERNAL
hw	ARCHIVE R0-2501 48V DC (SOCKET IN DE P110)	INTERNAL
hx	ARCHIVE R0-2501 48V DC (SOCKET IN DE P110)	INTERNAL
hy	ARCHIVE R0-2501 48V DC (SOCKET IN DE P110)	INTERNAL
hz	ARCHIVE R0-2501 48V DC (SOCKET IN DE P110)	INTERNAL
ia	ARCHIVE R0-2501 48V DC (SOCKET IN DE P110)	INTERNAL
ib	ARCHIVE R0-2501 48V DC (SOCKET IN DE P110)	INTERNAL
ic	ARCHIVE R0-2501 48V DC (SOCKET IN DE P110)	INTERNAL
id	ARCHIVE R0-2501 48V DC (SOCKET IN DE P110)	INTERNAL
ie	ARCHIVE R0-2501 48V DC (SOCKET IN DE P110)	INTERNAL
if	ARCHIVE R0-2501 48V DC (SOCKET IN DE P110)	INTERNAL
ig	ARCHIVE R0-2501 48V DC (SOCKET IN DE P110)	INTERNAL
ih	ARCHIVE R0-2501 48V DC (SOCKET IN DE P110)	INTERNAL
ii	ARCHIVE R0-2501 48V DC (SOCKET IN DE P110)	INTERNAL
ij	ARCHIVE R0-2501 48V DC (SOCKET IN DE P110)	INTERNAL
ik	ARCHIVE R0-2501 48V DC (SOCKET IN DE P110)	INTERNAL
il	ARCHIVE R0-2501 48V DC (SOCKET IN DE P110)	INTERNAL
im	ARCHIVE R0-2501 48V DC (SOCKET IN DE P110)	INTERNAL
in	ARCHIVE R0-2501 48V DC (SOCKET IN DE P110)	INTERNAL
io	ARCHIVE R0-2501 48V DC (SOCKET IN DE P110)	INTERNAL
ip	ARCHIVE R0-2501 48V DC (SOCKET IN DE P110)	INTERNAL
iq	ARCHIVE R0-2501 48V DC (SOCKET IN DE P110)	INTERNAL
ir	ARCHIVE R0-2501 48V DC (SOCKET IN DE P110)	INTERNAL
is	ARCHIVE R0-2501 48V DC (SOCKET IN DE P110)	INTERNAL
it	ARCHIVE R0-2501 48V DC (SOCKET IN DE P110)	INTERNAL
iu	ARCHIVE R0-2501 48V DC (SOCKET IN DE P110)	INTERNAL
iv	ARCHIVE R0-2501 48V DC (SOCKET IN DE P110)	INTERNAL
iw	ARCHIVE R0-2501 48V DC (SOCKET IN DE P110)	INTERNAL
ix	ARCHIVE R0-2501 48V DC (SOCKET IN DE P110)	INTERNAL
iy	ARCHIVE R0-2501 48V DC (SOCKET IN DE P110)	INTERNAL
iz	ARCHIVE R0-2501 48V DC (SOCKET IN DE P110)	INTERNAL
ja	ARCHIVE R0-2501 48V DC (SOCKET IN DE P110)	INTERNAL
jb	ARCHIVE R0-2501 48V DC (SOCKET IN DE P110)	INTERNAL
jc	ARCHIVE R0-2501 48V DC (SOCKET IN DE P110)	INTERNAL
jd	ARCHIVE R0-2501 48V DC (SOCKET IN DE P110)	INTERNAL
je	ARCHIVE R0-2501 48V DC (SOCKET IN DE P110)	INTERNAL
jf	ARCHIVE R0-2501 48V DC (SOCKET IN DE P110)	INTERNAL
jj	ARCHIVE R0-2501 48V DC (SOCKET IN DE P110)	INTERNAL
jk	ARCHIVE R0-2501 48V DC (SOCKET IN DE P110)	INTERNAL
jl	ARCHIVE R0-2501 48V DC (SOCKET IN DE P110)	INTERNAL
jm	ARCHIVE R0-2501 48V DC (SOCKET IN DE P110)	INTERNAL
jn	ARCHIVE R0-2501 48V DC (SOCKET IN DE P110)	INTERNAL
jo	ARCHIVE R0-2501 48V DC (SOCKET IN DE P110)	INTERNAL
jp	ARCHIVE R0-2501 48V DC (SOCKET IN DE P110)	INTERNAL
jq	ARCHIVE R0-2501 48V DC (SOCKET IN DE P110)	INTERNAL
jr	ARCHIVE R0-2501 48V DC (SOCKET IN DE P110)	INTERNAL
js	ARCHIVE R0-2501 48V DC (SOCKET IN DE P110)	INTERNAL
jt	ARCHIVE R0-2501 48V DC (SOCKET IN DE P110)	INTERNAL
ju	ARCHIVE R0-2501 48V DC (SOCKET IN DE P110)	INTERNAL
jv	ARCHIVE R0-2501 48V DC (SOCKET IN DE P110)	INTERNAL
jw	ARCHIVE R0-2501 48V DC (SOCKET IN DE P110)	INTERNAL
jx	ARCHIVE R0-2501 48V DC (SOCKET IN DE P110)	INTERNAL
gy	ARCHIVE R0-2501 48V DC (SOCKET IN DE P110)	INTERNAL
gz	ARCHIVE R0-2501 48V DC (SOCKET IN DE P110)	INTERNAL
ka	ARCHIVE R0-2501 48V DC (SOCKET IN DE P110)	INTERNAL
kb	ARCHIVE R0-2501 48V DC (SOCKET IN DE P110)	INTERNAL
kc	ARCHIVE R0-2501 48V DC (SOCKET IN DE P110)	INTERNAL
kd	ARCHIVE R0-2501 48V DC (SOCKET IN DE P110)	INTERNAL
ke	ARCHIVE R0	

- NOTES
1. PANEL & DOOR TO BE CONSTRUCTED FROM 3mm SHEET STEEL FOLDED AND WELDED.
 2. PAINT FINISH TO BE:
EXTERNAL - LIGHT ALUMINUM GREY TO BS 381C SHOE 697 SEMI GLOSS
INTERNAL - SEMI-GLOSS WHITE
 3. EARTHING FIXTURE NEEDED ON DOOR
 4. ALL DIMENSIONS IN mm
 5. HOLES IN BOTH SIDES FOR JOINING TO SUITES



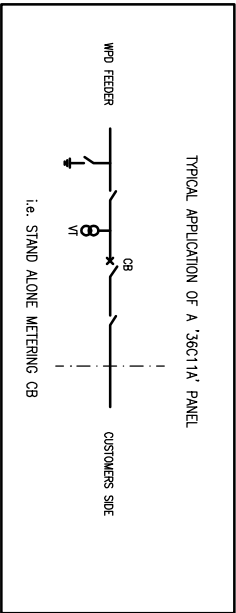
#	REF	DESCRIPTION	FUSE	LINK
	FS1	TRIP & CLOSE SUPPLY +VE	110V DC	16A
	FS2	TRIP & CLOSE SUPPLY -VE	110V DC	LINK
	FS3	CLOSING	110V DC	6A
	4			
	5			
	LK6	PROTECTION TRIP ISOLATION	110V DC	LINK
	7			
	LK8	CUSTOMER INTERTRIP SEND ISOLATION	110V DC	LINK
	LK9	CUSTOMER INTERTRIP SEND ISOLATION	110V DC	LINK
	LK10	CUSTOMER INTERTRIP RECEIVE ISOLATION	110V DC	LINK
	LK11	CUSTOMER INTERTRIP RECEIVE ISOLATION	110V DC	LINK
	12			
	13			
	14			
	LK15	MOO PROTECTION VT SUPPLY ISOLATION (1)	110V AC	LINK
	LK16	MOO PROTECTION VT SUPPLY ISOLATION (N)	110V AC	LINK
	LK17	DOC PROTECTION VT SUPPLY ISOLATION (L1)	110V AC	LINK
	LK18	DOC PROTECTION VT SUPPLY ISOLATION (L2)	110V AC	LINK
	LK19	DOC PROTECTION VT SUPPLY ISOLATION (L3)	110V AC	LINK
	LK20	DOC PROTECTION VT SUPPLY ISOLATION (N)	110V AC	LINK
	FS21	TRANSOLUCER VT SUPPLY (L1)	110V AC	2A
	FS22	TRANSOLUCER VT SUPPLY (L2)	110V AC	2A
	FS23	TRANSOLUCER VT SUPPLY (L3)	110V AC	2A
	LK24	TRANSOLUCER VT SUPPLY (N)	110V AC	LINK
	25			
	26			
	27			

FUSE & LINK LABELLING TO BE RED LETTERING ON WHITE BACKGROUND TO DENOTE TRIPPING TO OTHER PANELS.

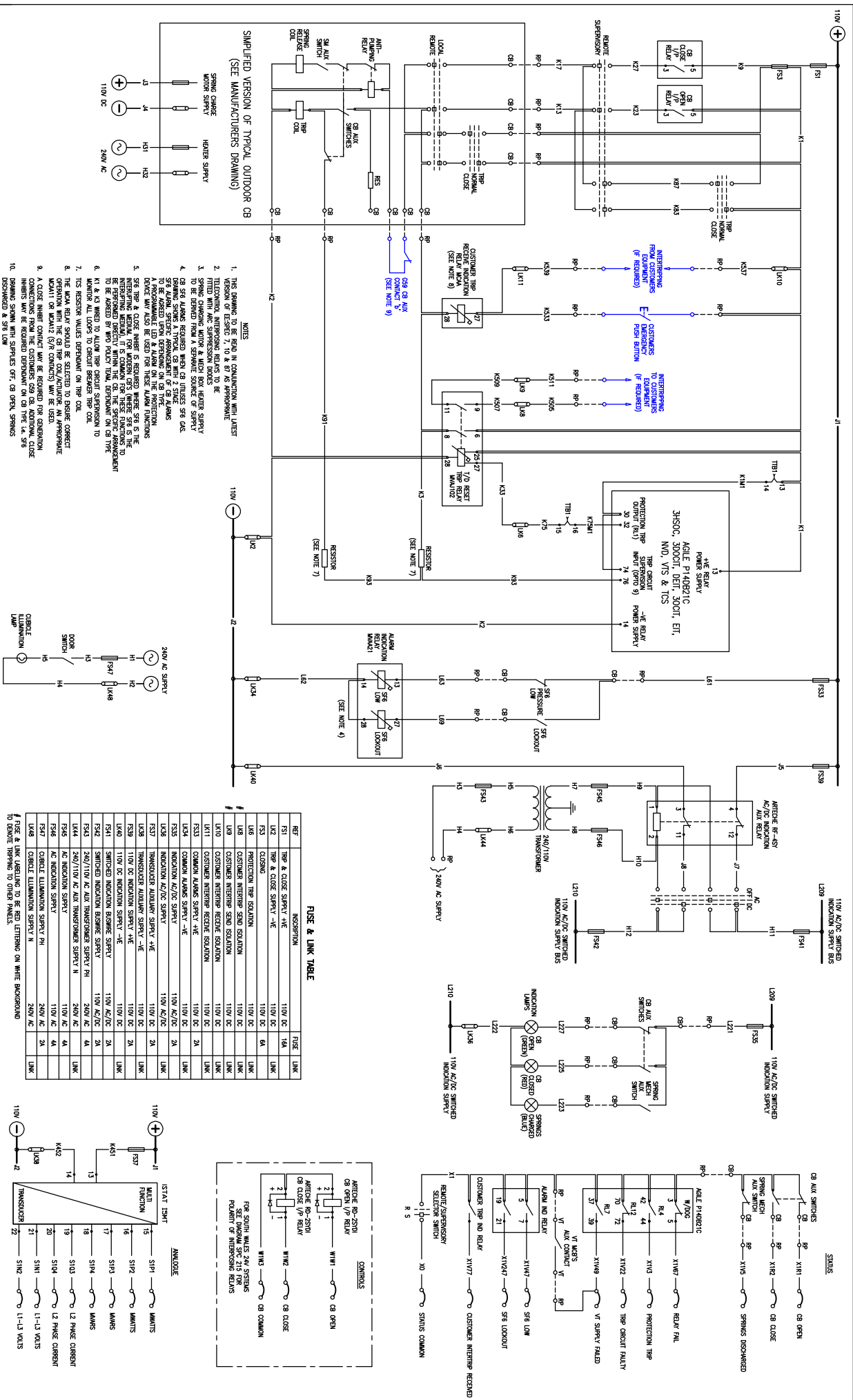
PANEL TO BE FRONT ENTRY (650mm) / REAR ENTRY (610mm),
(DELETE AS APPLICABLE)

(PANEL FRONT LAYOUT ALLOWS FOR BOTH REAR ENTRY AND FRONT OPENING HINGED DOOR)


				ORIGINAL ISSUE	Date	
			Drawn	CM	04/12/77	
			Checked			
1	CM					
Rev No Drawn	Chk'd	App'd	Date	ACIE P140Z RELAY REPLACED BY ACIE P140B & WRT MODEL NUMBERS ALTERED	Revision	SACLE
			28/09/86			
						WESTERN POWER DISTRIBUTION Design Department, Avonbank, BS2 OTB Tel: 0117 933 2000 Fax: 0117 933 2001.
						TITLE GENERAL ARRANGEMENT OF CONTROL/RELAY PANEL FOR OUTDOOR 36KV & 72KV INCOMING CIRCUIT WITH WEIERING (1250A BUSBARS)
						Dwg. No. SPC36C11A-GA
						Rev No. 1



- | | REF | INSPECTION | FILE# |
|------|--|------------|-------|
| L415 | NAD PROTECTION OF SPRAY SOLUTION (1) | 110V AC | LINK |
| L416 | NAD PROTECTION OF SPRAY SOLUTION (N) | 110V AC | LINK |
| L417 | NAD PROTECTION OF SPRAY SOLUTION (1) | 110V AC | LINK |
| L418 | NAD PROTECTION OF SPRAY SOLUTION (2) | 110V AC | LINK |
| L419 | DOC PROTECTION OF SPRAY SOLUTION (1) | 110V AC | LINK |
| L420 | DOC PROTECTION OF SPRAY SOLUTION (N) | 110V AC | LINK |
| F321 | TRANSFEROR OF SPRAY (1) | 110V AC | 2A |
| F322 | TRANSFEROR OF SPRAY (2) | 110V AC | 2A |
| F323 | TRANSFEROR OF SPRAY (N) | 110V AC | 2A |
| L424 | TRANSFEROR OF SPRAY (1) | 110V AC | LINK |
| L425 | TRANSFEROR OF SPRAY SOLUTION (1) | 110V AC | LINK |
| L426 | VOLUME CONTAINMENT OF SPRAY SOLUTION (1) | 110V AC | LINK |
| L427 | VOLUME CONTAINMENT OF SPRAY SOLUTION (2) | 110V AC | LINK |
| L428 | VOLUME CONTAINMENT OF SPRAY SOLUTION (N) | 110V AC | LINK |



REF	DESCRIPTION	11/09 GC	16/04
FS1	TEMP & CLOS. SUPPLY -4E	11/09 GC	FS1
UC2	TEMP & CLOS. SUPPLY -4E	11/09 GC	UC2
FS3	CLOSING	11/09 GC	6A
UC6	PERCESSION TEMP SOLUTION	11/09 GC	UC6
UC8	CUSTOMER INTERPRET SEND SOLUTION	11/09 GC	UC8
UC9	CUSTOMER INTERPRET SEND SOLUTION	11/09 GC	UC9
UC10	CUSTOMER INTERPRET SEND SOLUTION	11/09 GC	UC10
UC11	CUSTOMER INTERPRET SEND SOLUTION	11/09 GC	UC11
FS33	COMMON ALARMS SUPPLY -4E	11/09 GC	2A
FS34	COMMON ALARMS SUPPLY -4E	11/09 GC	2A
UC5	INDICATION M2/2 SUPPLY	11/09 GC/2S	2A
UC6	INDICATION M2/2 SUPPLY	11/09 GC/2S	2A
FS37	INDICATOR ALARMS SUPPLY -4E	11/09 GC	2A
UC8	INDICATOR ALARMS SUPPLY -4E	11/09 GC	2A
FS39	INDICATOR ALARMS SUPPLY -4E	11/09 GC	2A
UC9	INDICATOR ALARMS SUPPLY -4E	11/09 GC	2A
FS40	SMOKE INDICATION BLOWER SUPPLY	11/09 GC/2S	2A
FS42	SMOKE INDICATION BLOWER SUPPLY	11/09 GC/2S	2A
UC4	24V/110V AC A/C TRANSFORMER SUPPLY PH	24/09 GC	4A
UC4	24V/110V AC A/C TRANSFORMER SUPPLY PH	24/09 GC	4A
FS46	AC INDICATION SUPPLY	11/09 GC	4A
FS46	AC INDICATION SUPPLY	11/09 GC	4A
FS47	COMMON ILLUMINATION SUPPLY PH	24/09 GC	2A
UC48	CABLE CONNECTION SUPPLY PH	24/09 GC	2A

							ORIGINAL ISSUE		Date	WESTERN POWER DISTRIBUTION Design Department. Avonbank, Reeder Road, Bristol BS2 0TB Tel: 0117 935 2000 Fax: 0117 935 2001.			 WESTERN POWER DISTRIBUTION		Rev No.	
							Drawn	CM	04/12/17							
							Checked									
							Approved									
1	CM				28/02/18	AGILE P14DZ RELAY REPLACED BY AGILE P14DB	SCALE:						Drg. No.	SPEC36C11A-DC OUTDOOR		
						Revision	NIS							1		